

NB: NOTE that 2024/2025 courses AND Marks have CHANGED - we now use VIRTUAL MARKS - and have simpler courses - CHECK THE COURSES!

TWILIGHT 1 START YELLOW 2 (S), VM 21 (S), R1 (S), YELLOW MP(S), FINISH YELLOW 2(S)

TWILIGHT 1 R START YELLOW 2 (P), YELLOW MP (P), R1 (P), VM 21 (P), FINISH YELLOW 2 (P)

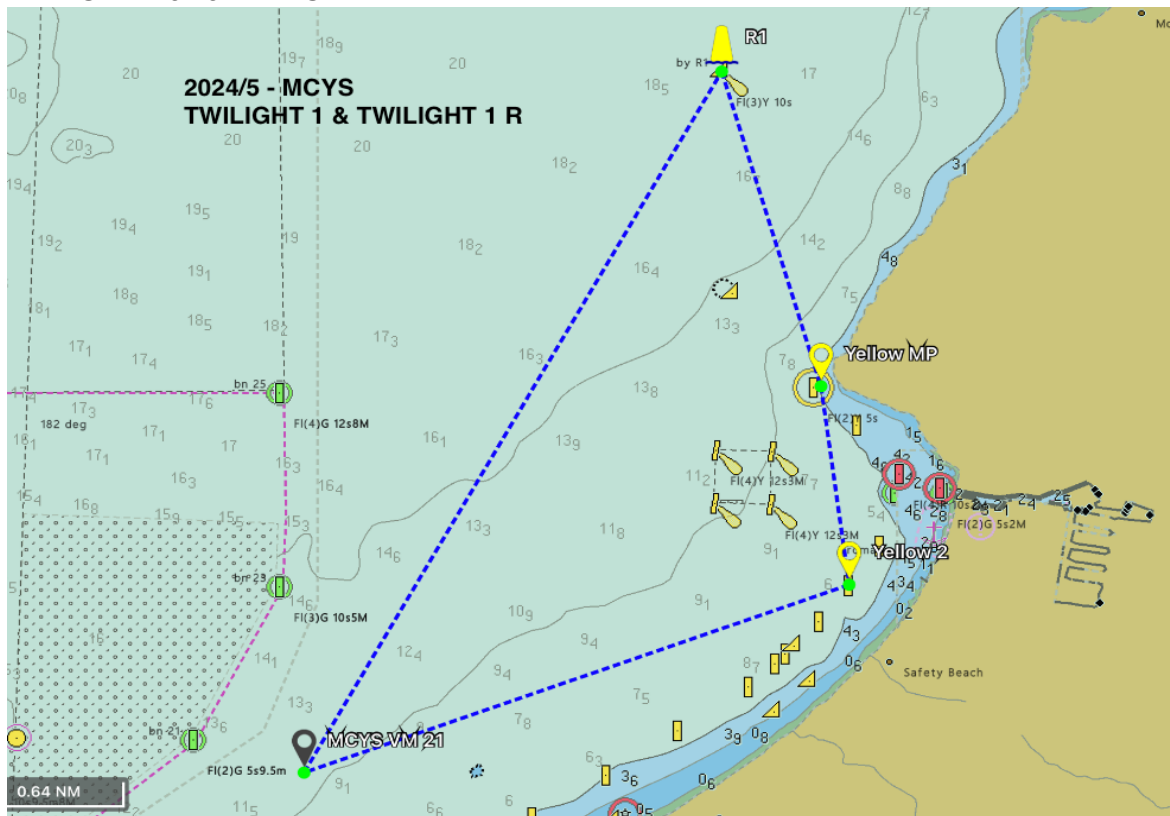
< Routes Twilight 1 📍

Edit	Distance	Scroll To	Goto
Yellow 2			📍
MCYS VM 21		238° Mag, 2.48 NM	📍
R1		017° Mag, 6.13 NM	🚨
Yellow MP		151° Mag, 7.62 NM	📍
Yellow 2		160° Mag, 8.52 NM	📍

< Routes Twilight 1 R 📍

Edit	Distance	Scroll To	Goto
Yellow 2			📍
Yellow MP		340° Mag, 0.91 NM	📍
R1		331° Mag, 2.39 NM	🚨
MCYS VM 21		197° Mag, 6.04 NM	📍
Yellow 2		058° Mag, 8.52 NM	📍

TWILIGHT 1 and TWILIGHT 1 R










TWILIGHT 2 YELLOW 2 (S), LIGHTHOUSE (S), MUSSEL FARM SW (S),

	MUSSEL FARM NW (S), YELLOW MP (S), YELLOW 2 (S)
TWILIGHT 2 R	YELLOW 2 (P), YELLOW MP (P), MUSSEL FARM NW (P),
	MUSSEL FARM SW (P), LIGHTHOUSE (P), YELLOW 2 (P)

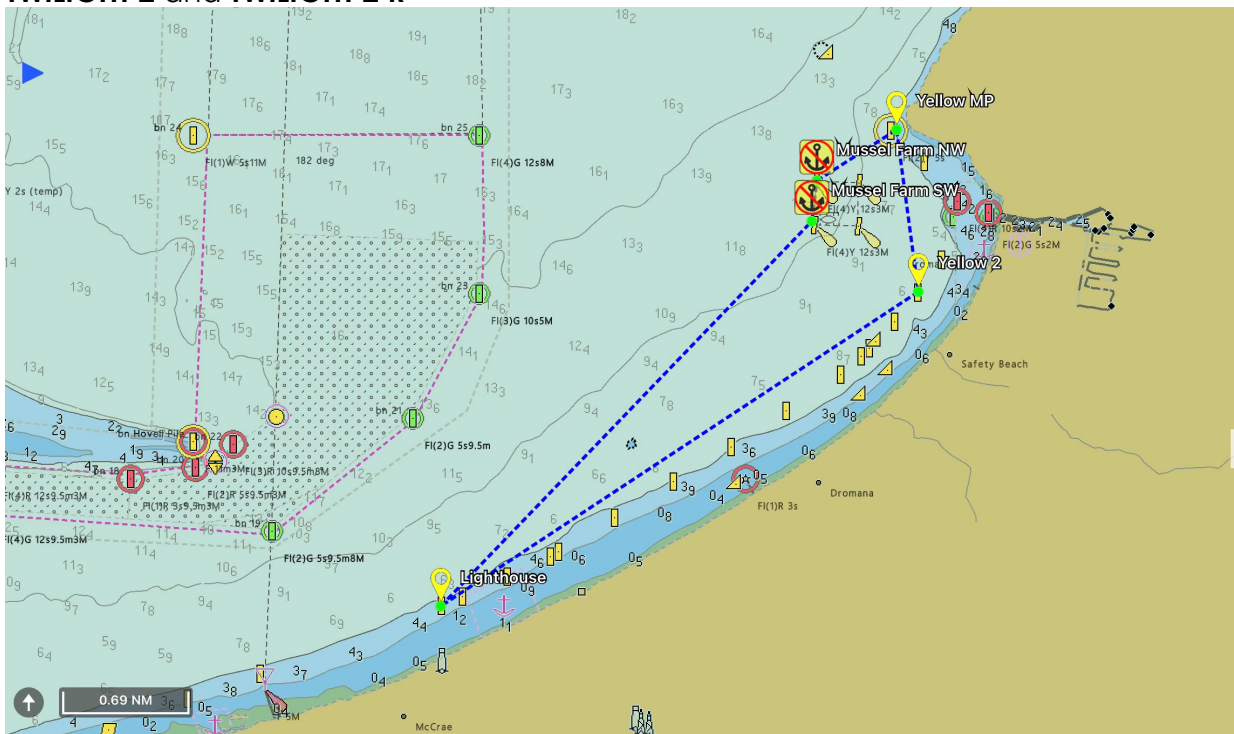
< Routes Twilight 2 

Edit	Distance	Scroll To	Goto
Yellow 2			
Lighthouse		225° Mag, 3.17 NM	
Mussel Farm SW		032° Mag, 6.14 NM	
Mussel Farm NW		355° Mag, 6.37 NM	
Yellow MP		045° Mag, 6.89 NM	
Yellow 2		160° Mag, 7.80 NM	

< Routes Twilight 2 R 

Edit	Distance	Scroll To	Goto
Yellow 2			
Yellow MP		340° Mag, 0.91 NM	
Mussel Farm NW		225° Mag, 1.43 NM	
Mussel Farm SW		175° Mag, 1.66 NM	
Lighthouse		212° Mag, 4.63 NM	
Yellow 2		045° Mag, 7.80 NM	

TWILIGHT 2 and TWILIGHT 2 R



TWILIGHT 3	YELLOW 2 (S), PM (S), VM 21 (S), MUSSEL FARM NW (S), YELLOW MP (S), YELLOW 2 (S)
TWILIGHT 3 R	YELLOW 2 (P), YELLOW MP (P), MUSSEL FARM NW (P), VM 21 (P), PM (P), YELLOW 2 (P)

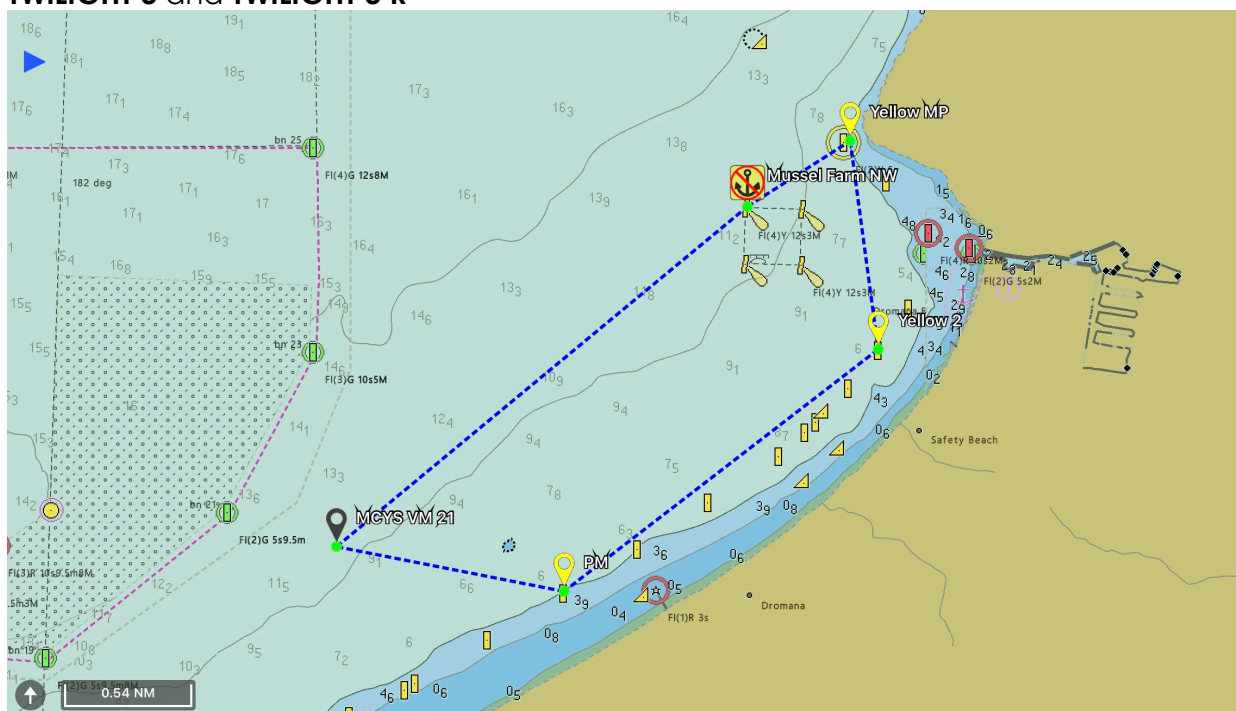
< Routes Twilight 3 [↑](#)

Edit	Distance	Scroll To	Goto
Yellow 2			
PM		220° Mag, 1.71 NM	
MCYS VM 21		269° Mag, 2.71 NM	
Mussel Farm NW		038° Mag, 5.01 NM	
Yellow MP		045° Mag, 5.53 NM	
Yellow 2		160° Mag, 6.44 NM	

< Routes Twilight 3 R [↑](#)

Edit	Distance	Scroll To	Goto
Yellow 2			
Yellow MP		340° Mag, 0.91 NM	
Mussel Farm NW		225° Mag, 1.43 NM	
MCYS VM 21		218° Mag, 3.73 NM	
PM		089° Mag, 4.73 NM	
Yellow 2		040° Mag, 6.44 NM	

TWILIGHT 3 and TWILIGHT 3 R








TWILIGHT 4 YELLOW 2 (S), PM (S), R1 (S), YELLOW MP (S), YELLOW 2 (S)

TWILIGHT 4 R YELLOW 2 (P), YELLOW MP(P), R1 (P), PM (P), YELLOW 2 (P)

< Routes

Twilight 4



Edit	Distance	Scroll To	Goto
Yellow 2			
PM		220° Mag, 1.71 NM	
R1		002° Mag, 5.17 NM	
Yellow MP		151° Mag, 6.66 NM	
Yellow 2		160° Mag, 7.57 NM	

< Routes

Twilight 4 R

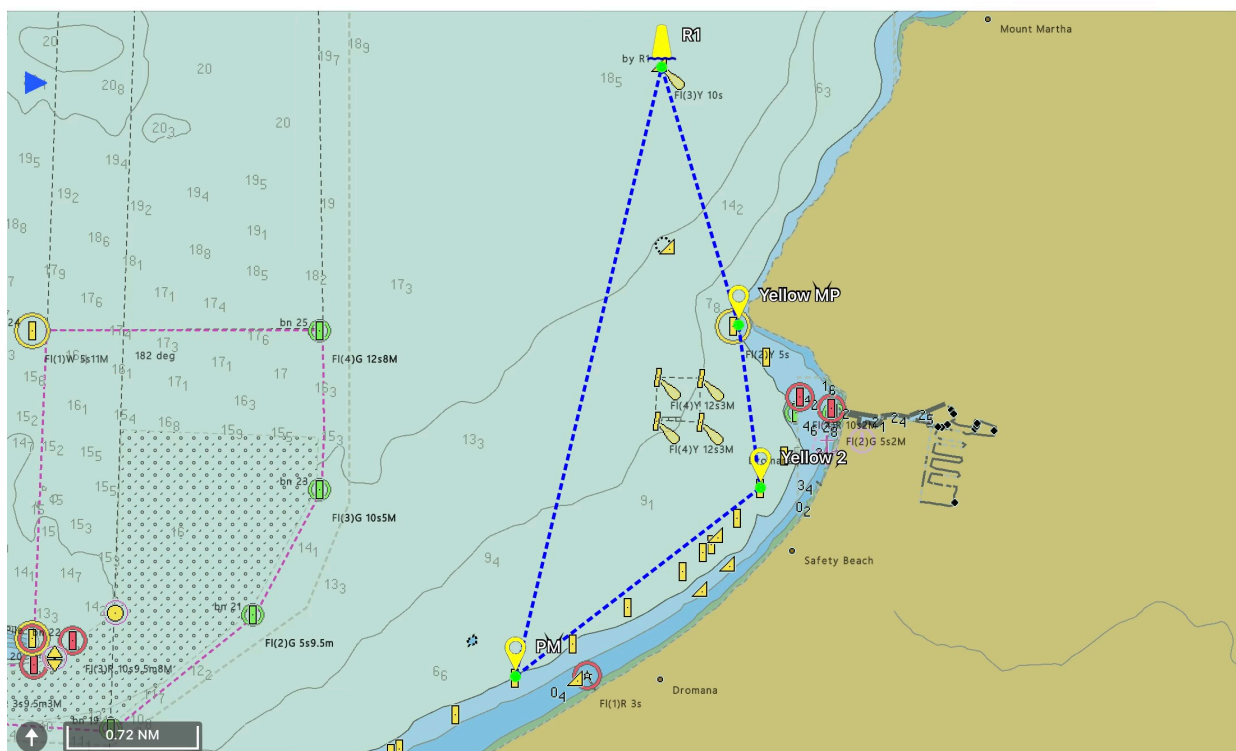


Edit	Distance	Scroll To	Goto
Yellow 2			
Yellow MP		340° Mag, 0.91 NM	
R1		331° Mag, 2.39 NM	
PM		182° Mag, 5.86 NM	
Yellow 2		040° Mag, 7.57 NM	

TWILIGHT 4 and TWILIGHT 4 R

Charts

iNavX Charts



START AND FINISH

The start/finish line shall be at YELLOW 2 and be an imaginary line extending from YELLOW 2 due East (towards the shore) at 090 degrees (True). Boats crossing the start line before their start time may be scored OCS or DNS.

NOTE the start/finish is either in a generally Northerly direction, leaving YELLOW 2 to Port, or generally Southerly direction, leaving YELLOW 2 to Starboard as per courses