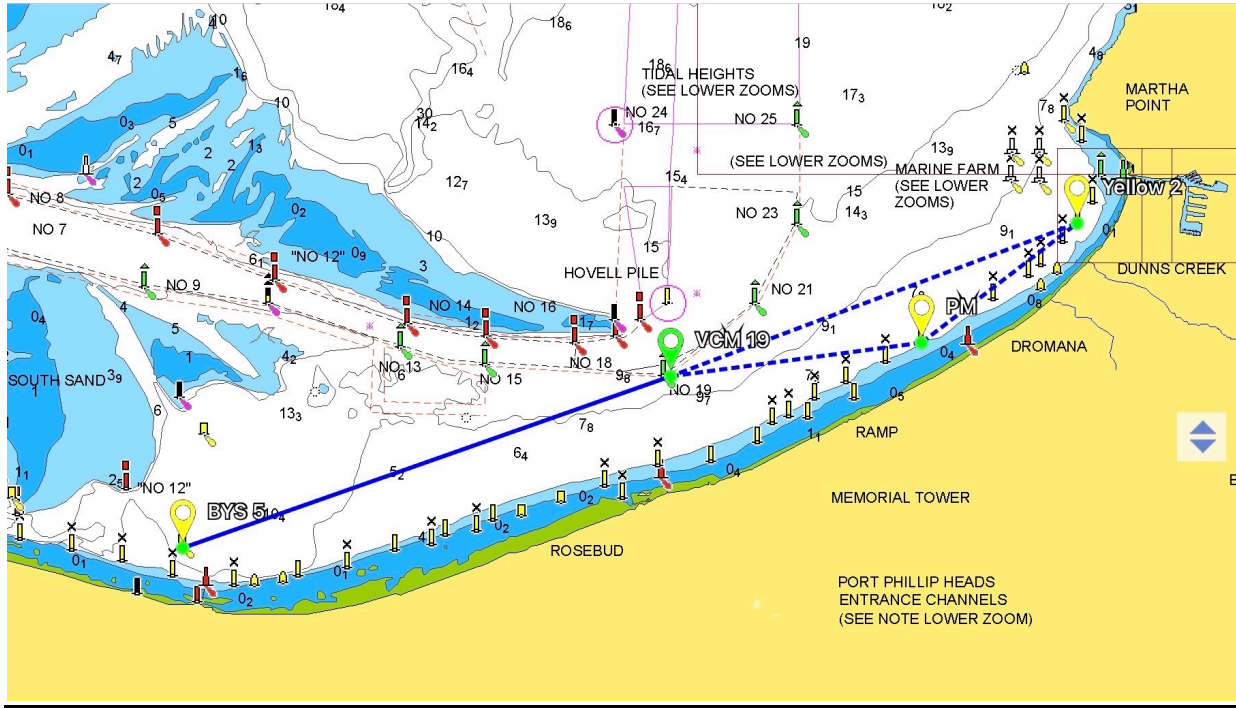


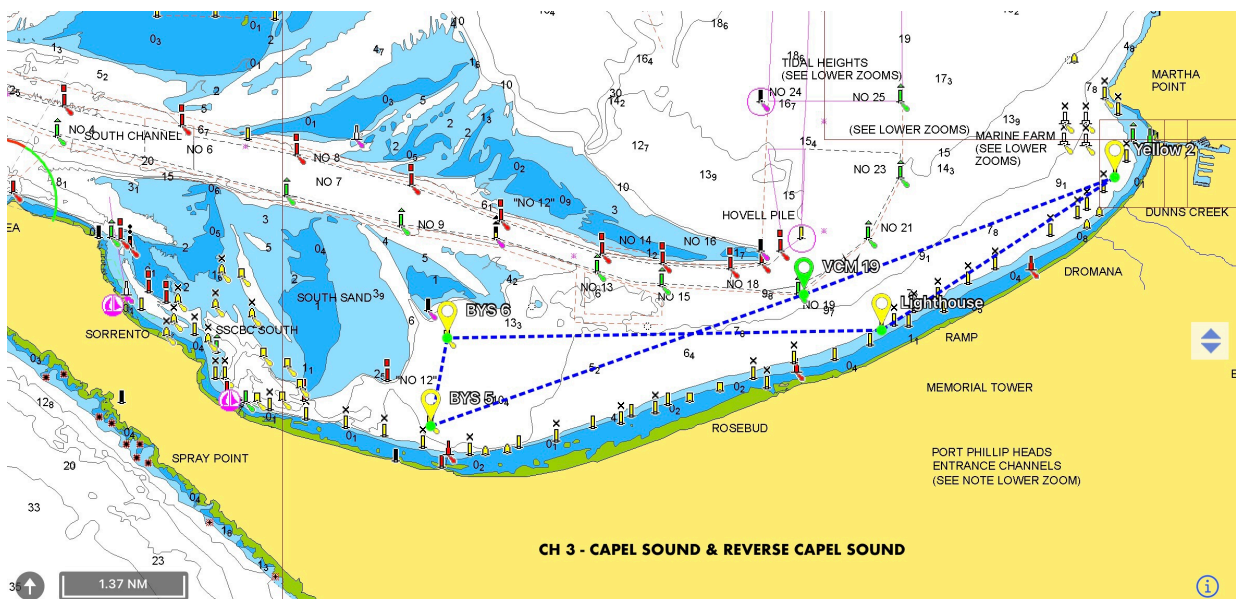
**NB: NOTE that 2023/2024 courses AND Marks have changed and we no longer use channel marks as rounding marks - we now use VIRTUAL MARKS close to the channel marks as designated "VCM" - CHECK THE COURSES!**

**CH 1- Rye & Return - YELLOW 2(S), VCM 19 (P), BYS 5 (S), VCM 19 (S), PM (P),  
YELLOW 2 (P) (16.8 NM)**

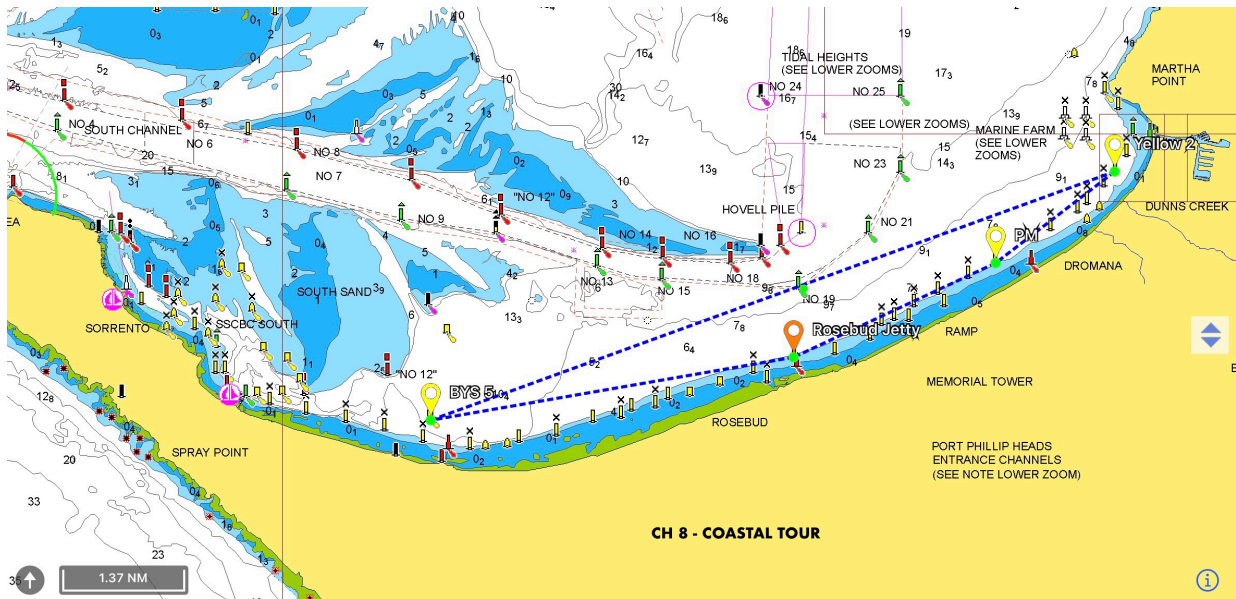


**CH 3-Capel Sound - YELLOW 2 (S), Lighthouse (S), BYS 6 (P), BYS 5 (P), VCM 19 (S),  
YELLOW 2 (P) (17.4 NM)**

**CH 6-REVERSE Capel Sound - YELLOW 2 (S), VCM 19(P), BYS 5(S), BYS 6 (S), Lighthouse(P),  
YELLOW 2 (P) (17.4 NM)**

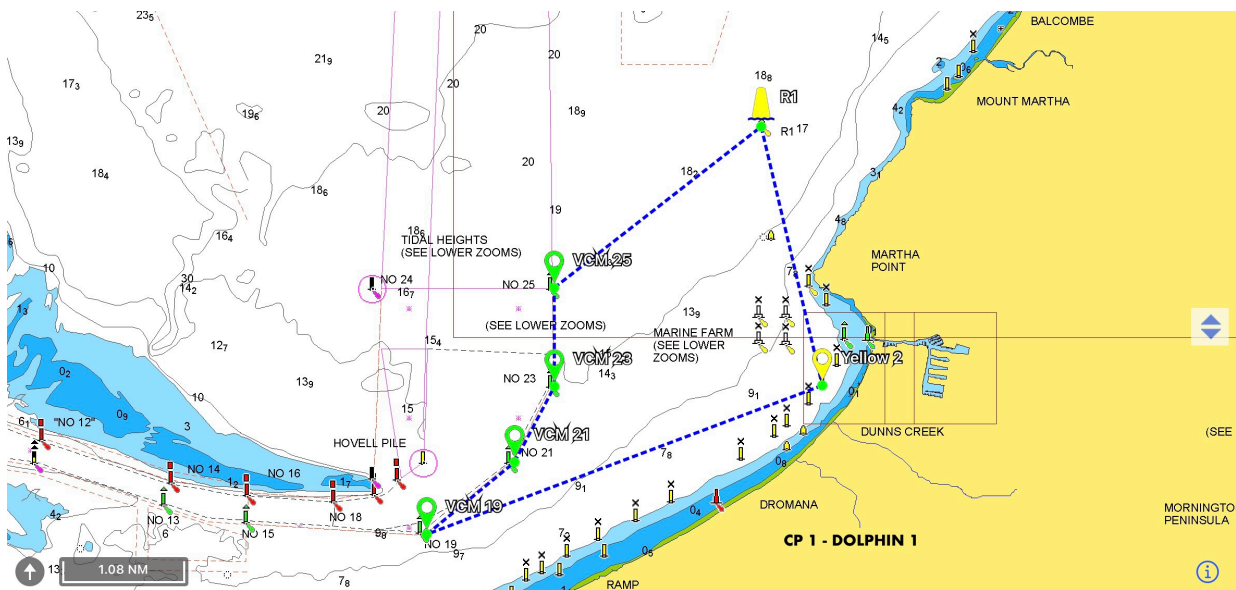


**CH 8- COASTAL TOUR - YELLOW 2 (S), PM (S), Rosebud Jetty (S), BYS 5 (S), YELLOW 2 (P)  
(16.7 NM)**

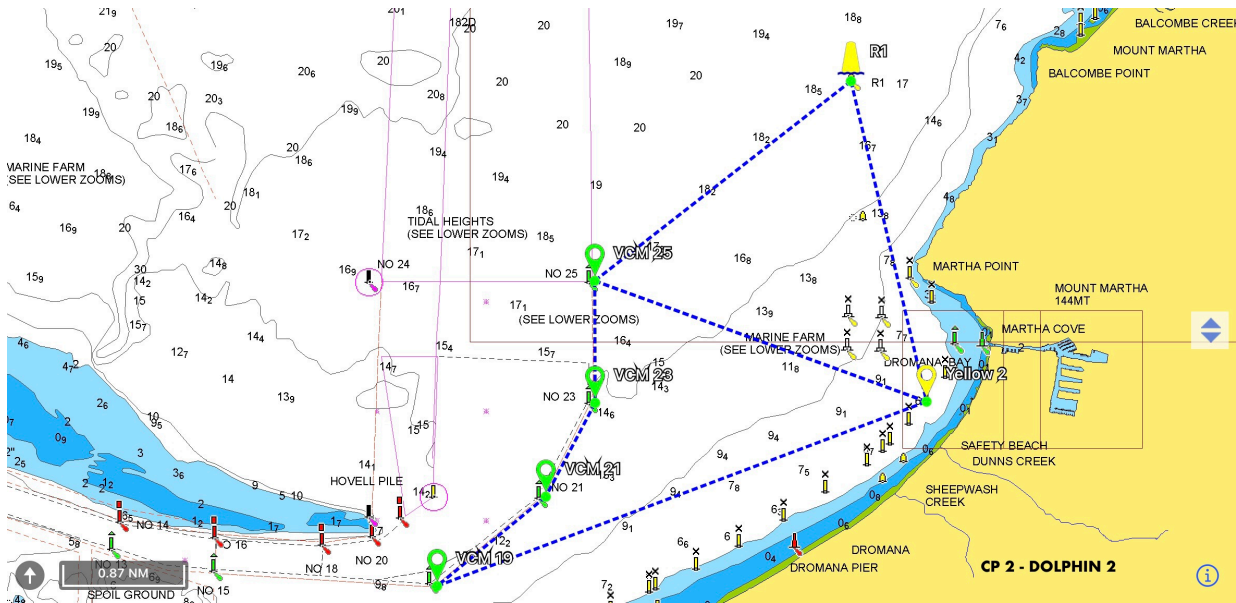


**CRUISE PURSUIT ("CP") Courses:**

**CP 1- "Dolphin 1" - YELLOW 2 (S), VCM 19(S), VCM 21 (P), VCM23 (P), VCM 25(S), R1(S),  
YELLOW 2 (S) (11.19 NM)**

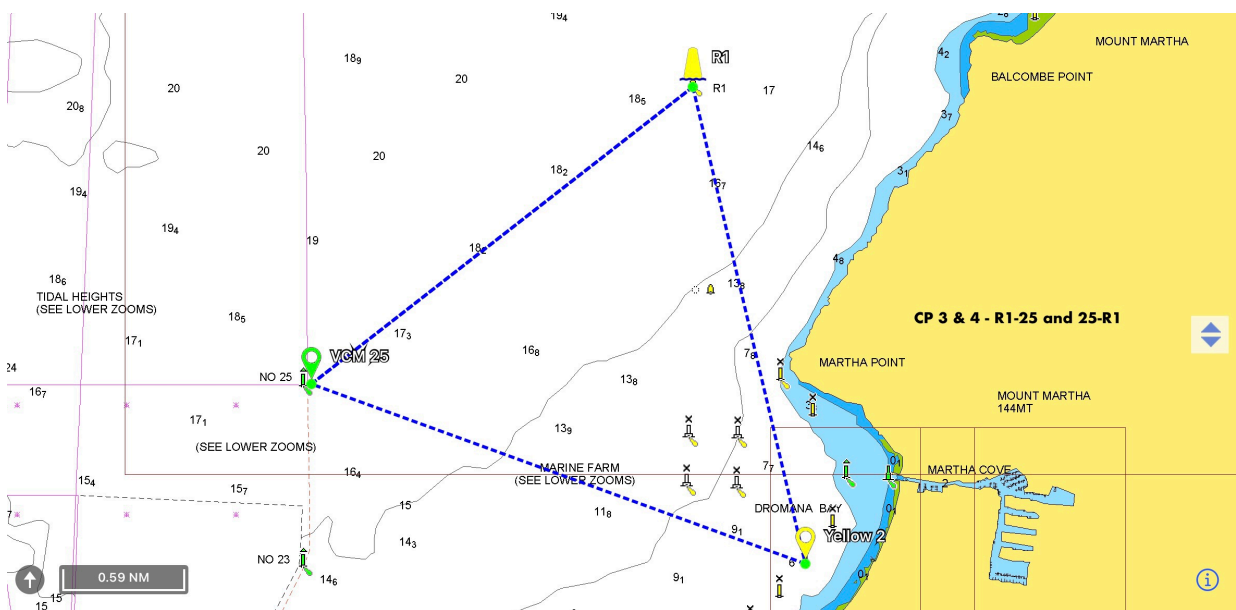


**CP 2 - "Dolphin 2" - YELLOW 2 (S), VCM 25(S), R1 (S), YELLOW 2 (S), VCM 25 (P), VCM 23 (S), VCM 21(S), VCM 19 (P), YELLOW 2 (P) (16.29 NM)**



**CP 3 - "R1- 25" - YELLOW 2 (P), R1 (P), VCM 25 (P), R1 (P), VCM 25 (P), YELLOW 2 (P) (11.99 NM)**

**CP 4 - "25 - R1" - YELLOW 2 (S), VCM 25 (S), R 1 (S), VCM 25 (S), R1 (S), YELLOW 2 (S) (11.99 NM)**



**CP 5- "Martha Pt Coastal" - YELLOW 2 (S), PM (S), VCM 19(S), VCM 21(P), R1 (S),  
YELLOW 2 (S) (11.05 NM)**

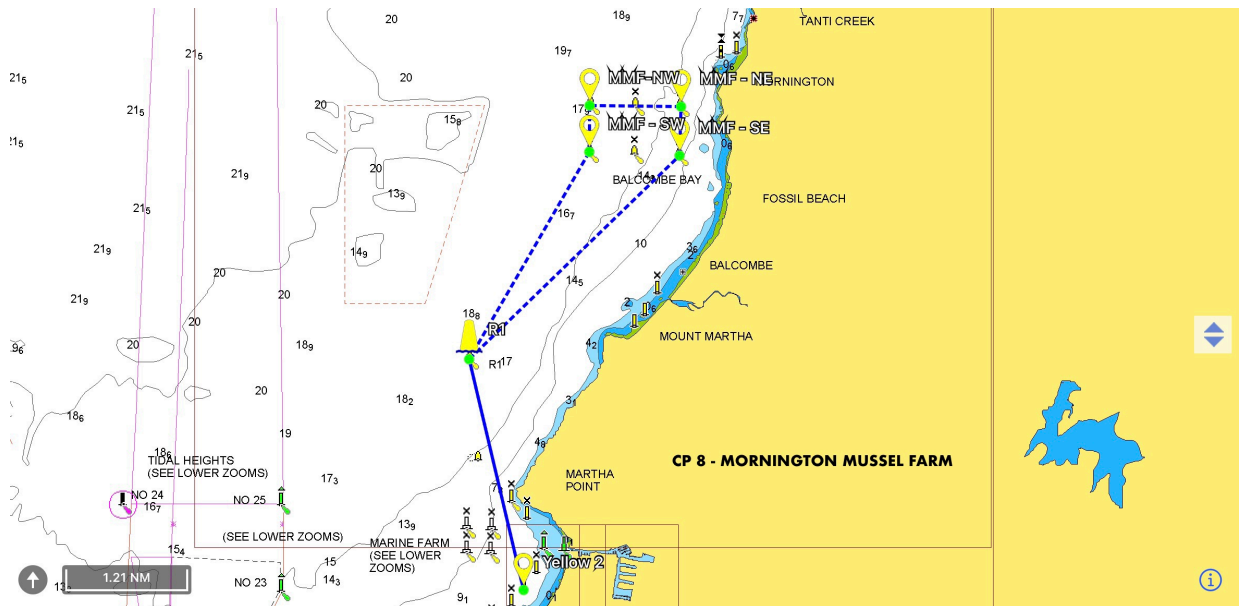


**CP 6 - "Figure 8.1"- YELLOW 2 (P), R1 (P), Lighthouse (S), VCM 19 (S), YELLOW 2 (P)  
(11.72 NM)**

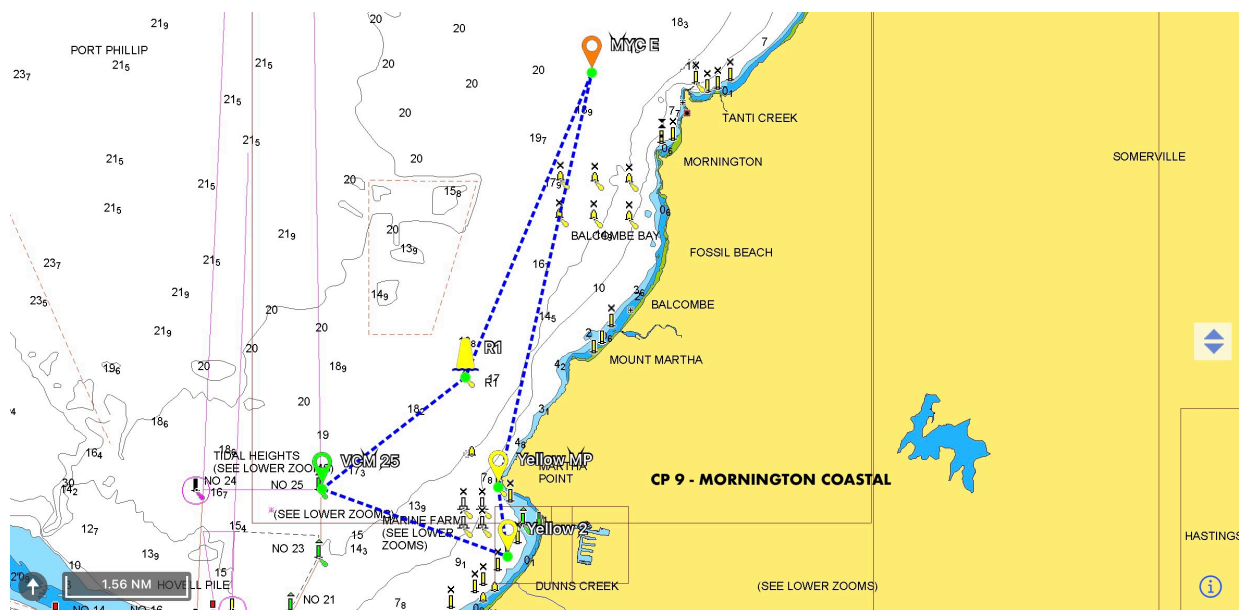
**CP 7- "Figure 8.2" - YELLOW 2 (S), VCM 19 (P), Lighthouse (P), R1 (S), YELLOW 2 (S)  
(11.72 NM)**



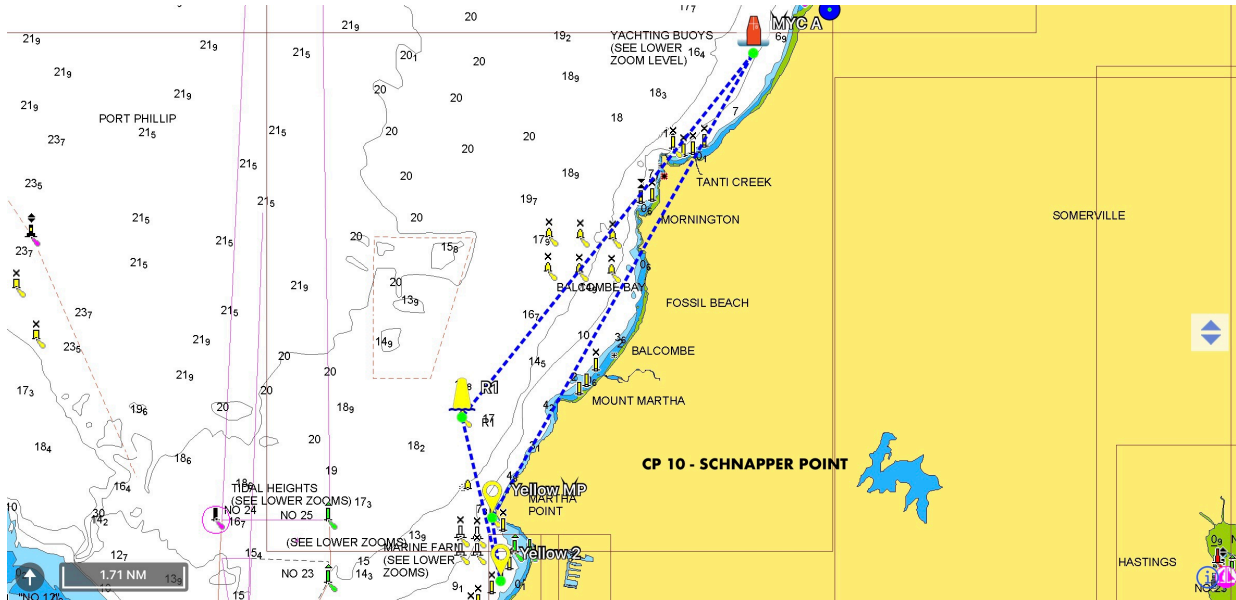
**CP 8 - "Mornington Mussel Farm" - YELLOW 2 (P), R 1 (S), MMF-SE (P), MMF-NE (P),  
MMF-NW (P), MMF-SW (P), R1 (P), YELLOW 2 (S)**  
(Around Mornington Mussel Farm anti-clockwise) **(12.01 NM)**



**CP 9 - "Mornington Coastal" - YELLOW 2 (P), YELLOW MP (P), MYC E (P), R1 (S)**  
**VCM 25 (P), YELLOW 2 (P) 15.60 NM)**

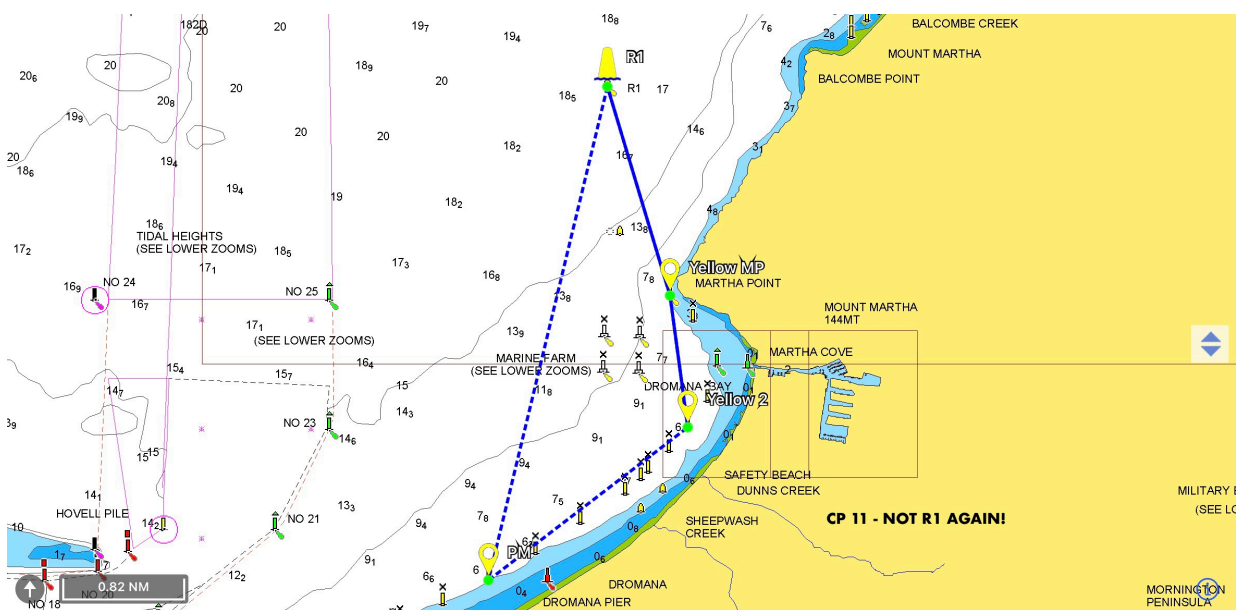


**CP 10 - "Schnapper Point" - YELLOW 2 (P), YELLOW MP (P), MYC A (S),  
R 1 (P), YELLOW 2 (S) ( 17.47 NM)**



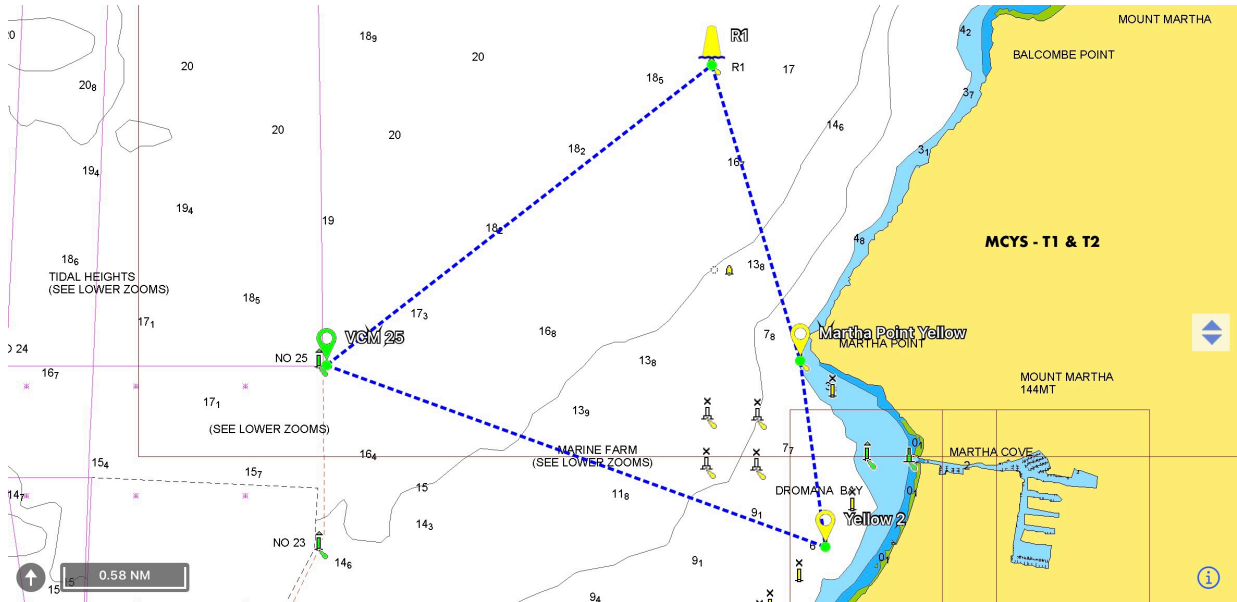
**NB: MUSSEL FARMS ARE AN OBSTRUCTION - NOT TO BE TRAVERSED and DO NOT ATTEMPT TO SAIL ACROSS LAND! (IE. DO NOT FOLLOW THE COURSE WHERE IT CROSSES LAND!)**

**CP 11 - "NOT R1 Again" - YELLOW 2 (P), YELLOW MP (P), R1 (P), PM (P), YELLOW 2 (P),  
YELLOW MP(P), R1 (P), YELLOW MP (S), YELLOW 2 (S) (12.33 NM)**

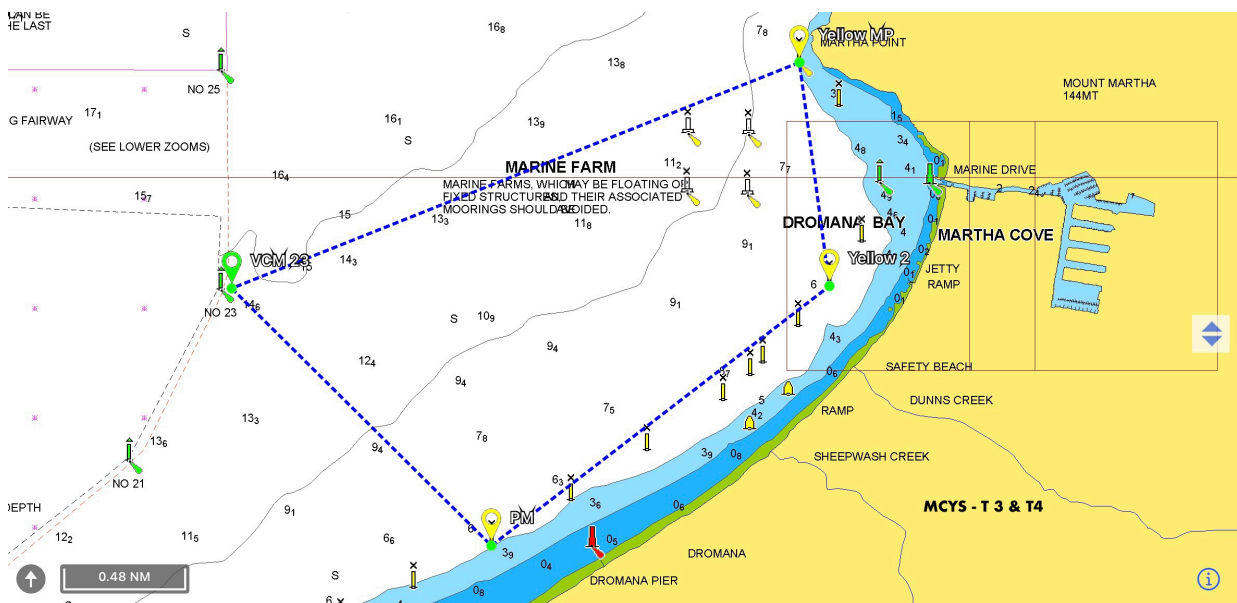


**TWILIGHTS**

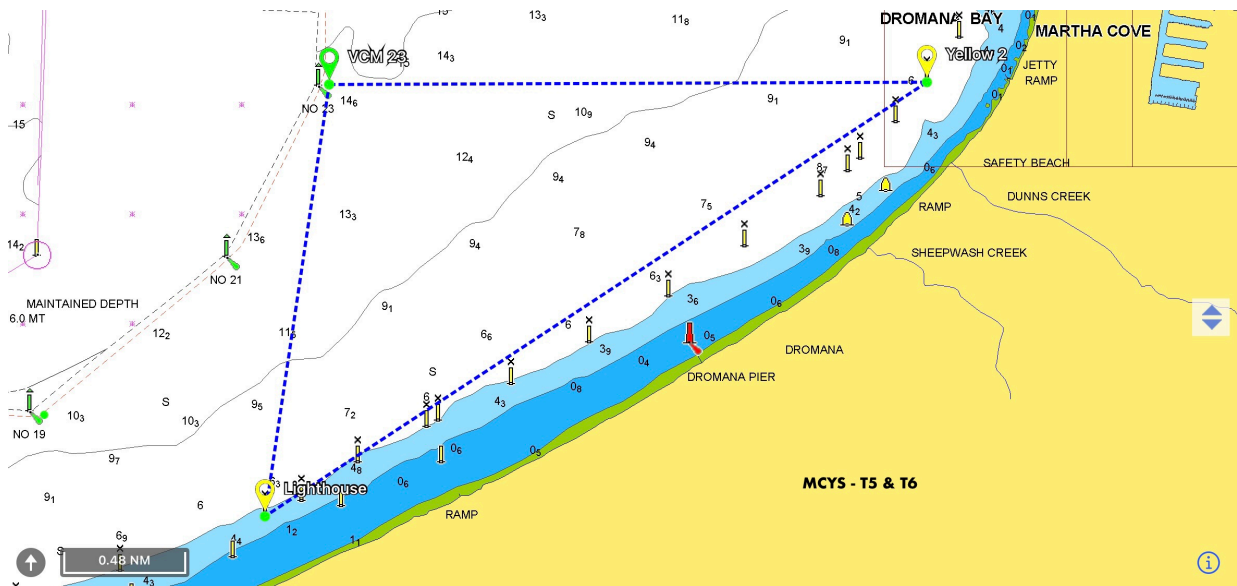
<b>T 1</b>	YELLOW 2 (S), VCM 25(S), R1(S), YELLOW MP(S), YELLOW 2(S) <b>(7.83 NM)</b>
<b>T 2</b>	YELLOW 2 (P), YELLOW MP(P), R1 (P), VCM 25(P), YELLOW 2(P) <b>(7.83 NM)</b>



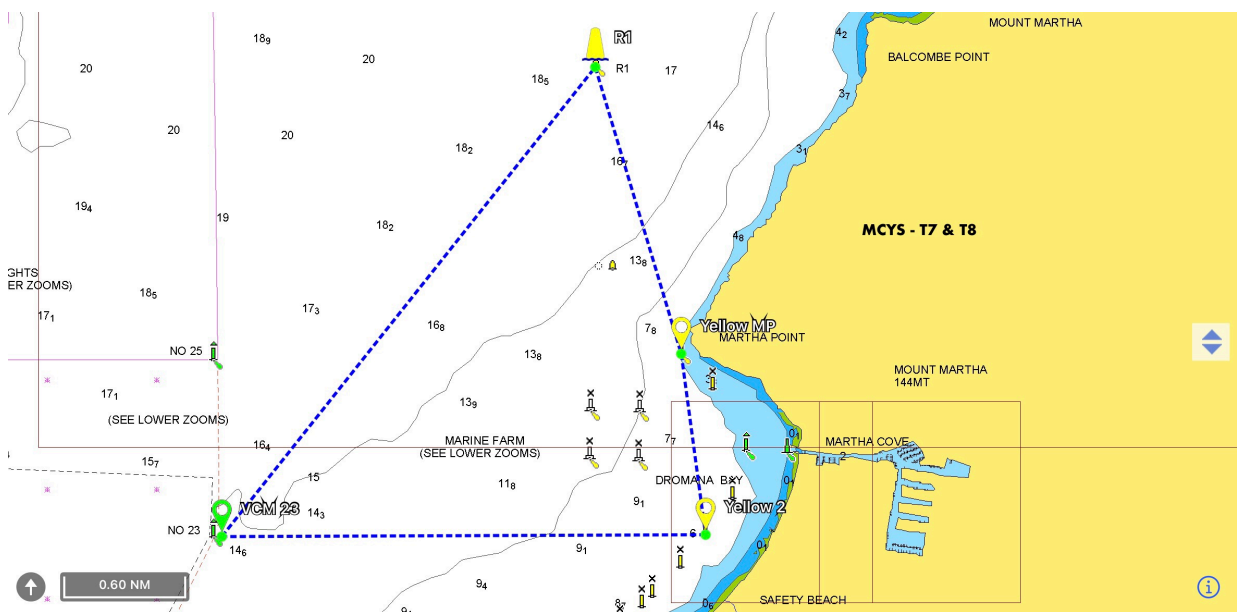
<b>T 3</b>	YELLOW 2 (P), YELLOW MP (P), VCM 23 (P), PM (P), YELLOW 2 (P) <b>(6.53 NM)</b>
<b>T 4</b>	YELLOW 2 (S), PM (S), VCM 23 (S), YELLOW MP (S), YELLOW 2 (S) <b>(6.53 NM)</b>



<b>T 5</b>	YELLOW 2 (S), Lighthouse (S), VCM 23(S), YELLOW 2 (S) <b>(7.32 NM)</b>
<b>T 6</b>	YELLOW 2 (P), VCM 23 (P), Lighthouse (P), YELLOW 2 (P) <b>(7.32 NM)</b>



<b>T 7</b>	YELLOW 2 (P), YELLOW MP (P), R1 (P), VCM 23 (P), YELLOW 2 (P) <b>(7.77 NM)</b>
<b>T 8</b>	YELLOW 2 (S), VCM 23 (S), R1 (S), YELLOW MP (S), YELLOW 2 (P) <b>(7.77 NM)</b>



**START AND FINISH**

The start/finish line shall be at YELLOW 2 (see 9.1 SAILING INSTRUCTIONS) and be an imaginary line extending from YELLOW 2 due East (towards the shore) at 090 degrees (True). Boats crossing the start line before their start time may be scored OCS or DNS.

**NOTE** that the start is either in a generally Northerly direction, leaving YELLOW 2 to Port, designated by Start (P) in the course directions, or in a generally Southerly direction leaving the YELLOW 2 to Starboard, designated by Start (S) in the course directions.