



## NOTICE OF COMBINED POWER AND SAIL EVENT

M.C.Y.S

# BLAIRGOWRIE CHALLENGE 2021



<https://youtu.be/xMpTZPhcBgU>

**When:**

Saturday 20th to Sunday - 21 February 2021

**Where:**

***THIS IS A COMBINED POWER AND SAIL EVENT TO BLAIRGOWRIE!***

**What's on:**

***Cruise in Company & Navigation Challenge***

***or***

***Passage Cruise Pursuit Start***

**Prizes will be awarded for 1st, 2nd and 3rd and novelty as well!**  
in both power and sail events as long as we get at least 3 participants in each!

**Blairgowrie is a great place to visit!**

**Enjoy the safety of a world class Marina, and the great 'club' welcome that Blairgowrie offers visiting vessels.**

**Gareth Davies (Vice Commodore) and John Stuart (RC -Power) will be the cruise officials.**

Gareth Davies - "ToniK" - 0403 438 172  
John Stuart - "Elle" - 0430 445 998

Radio contact via **VHF channel 72** – and monitoring Ch 16 throughout the cruise.

**Cost:**

There is **NO** entry cost as long as you enter by 12/2/2021.  
Berthing is **FREE** if you eat and drink at BYS Saturday night!

**ENTRY IS ESSENTIAL** by emailing your **intention to participate** [ENTER HERE](#) (power & sail)

**POWER BOATS**

**SATURDAY 20 February 2021**

**1300 hrs - Assembly of the cruise fleet** - in the vicinity of Yellow 2 (the second Yellow Pile South of Martha Cove entrance).

**Depart** - from **1300 hrs** - for a leisurely cruise along the coast to Blairgowrie - **OR**

**Enter the Navigation Challenge** -

You may choose to enter the **Navigation Challenge** - 12.6 NM approx.

**The Navigation Challenge**

**Prior to the challenge**, you will need to submit your **predicted cruise log** (attached for completion) no later than 24 hours prior to the start -(ie before 1300 hrs 19 February 2021) by email to [commodore@mcys.com.au](mailto:commodore@mcys.com.au) nominating:

- your start time between 1300 and 1330 hrs
- the constant speed at which you will travel
- cruising speeds only - this isn't a race!
- your predicted arrival times at each of the 8 marks
- there are **8 marks** in the Challenge Course
- you will have to take into account:
  - wind
  - tide
- your predicted speed you **must not vary except as safety requires**
- scoring:
  - You will get **ONE** point for each minute that you miss your predicted time by - either early or late!
- the boat with the **least number of points** wins!

**After the challenge** you will need to submit your cruise log **recording actual time** and **scored points** to [commodore@mcys.com.au](mailto:commodore@mcys.com.au)

**This is an HONESTY event** -

- ~ all times are self-recorded
- ~ you will be responsible for maintaining your predicted constant speed (cruise speeds only)
- ~ **this is not a speed test!**

**NB: however** GPS logs may be examined (NOT!)  
and the **Challenge Director** may be bribed with fine Wines or Spirits (JOKE!)

\*\* see attached **Predicted Log** for completion **PRIOR TO START**, and **AFTER** finishing - email to [commodore@mcys.com.au](mailto:commodore@mcys.com.au) no later than 24 hours prior to the start- (by 1300 hrs 19 February 2021) and as soon as possible after finishing the cruise.

\*\* see attached **course** showing the 8 marks



M.C.Y.S

## YACHTS

**Entry** - Yachts may enter by emailing their intention to participate to [commodore@mcys.com.au](mailto:commodore@mcys.com.au) by **12 February 2021 at midday**. *Entries after this may be accepted at the Cruise Director's sole discretion but **berthing at BYS cannot be guaranteed**.*

### Start times

Each yacht entering the event will be allotted a start time. Handicaps will also be applied at the end of the race. No handicap decisions/allocations will be subject to redress or protest! Start times are designed to have all yachts finishing at around the same time.

### Course

The Course is attached - 12.6 nm approx

**This is an HONESTY event and WHITE SAILS ONLY** - ie Main and Jib, unless you want to fly **extras** - where you will incur a **7.5% time penalty** but you might win the "*colour and movement*" award!

~ yachts will ensure that they do not cross the start line before their allotted start time

~ yachts will ensure that they round or pass each mark of the course

~ yachts will record their own finishing times and complete the declaration attached at the end of the event, and forward to [commodore@mcys.com.au](mailto:commodore@mcys.com.au)

**Sailing Instructions:** Current MCYS Sailing Instructions apply, amended as necessary.

## COMBINED POWER AND SAIL

### **BOOKING A BERTH**

Once all entries are known, berths will be allocated on a **first in-first served** basis.

Blairgowrie have reserved mooring places for MCYS boats - which will be finalised once we know how many of each of power and sail are participating.

Entries may be made by emailing **intention to participate** [ENTER HERE](#) (power & sail)

So that berthing arrangements can be made, **entries will close on Friday 12 February 2021 at 12pm**. We may be able to enter boats after this, but it will depend entirely on the availability of berths at Blairgowrie - so if you want a place, enter early!

Visitors are able to enjoy all BYS member facilities including access to the new clubhouse with its excellent bar and sumptuous bistro services.

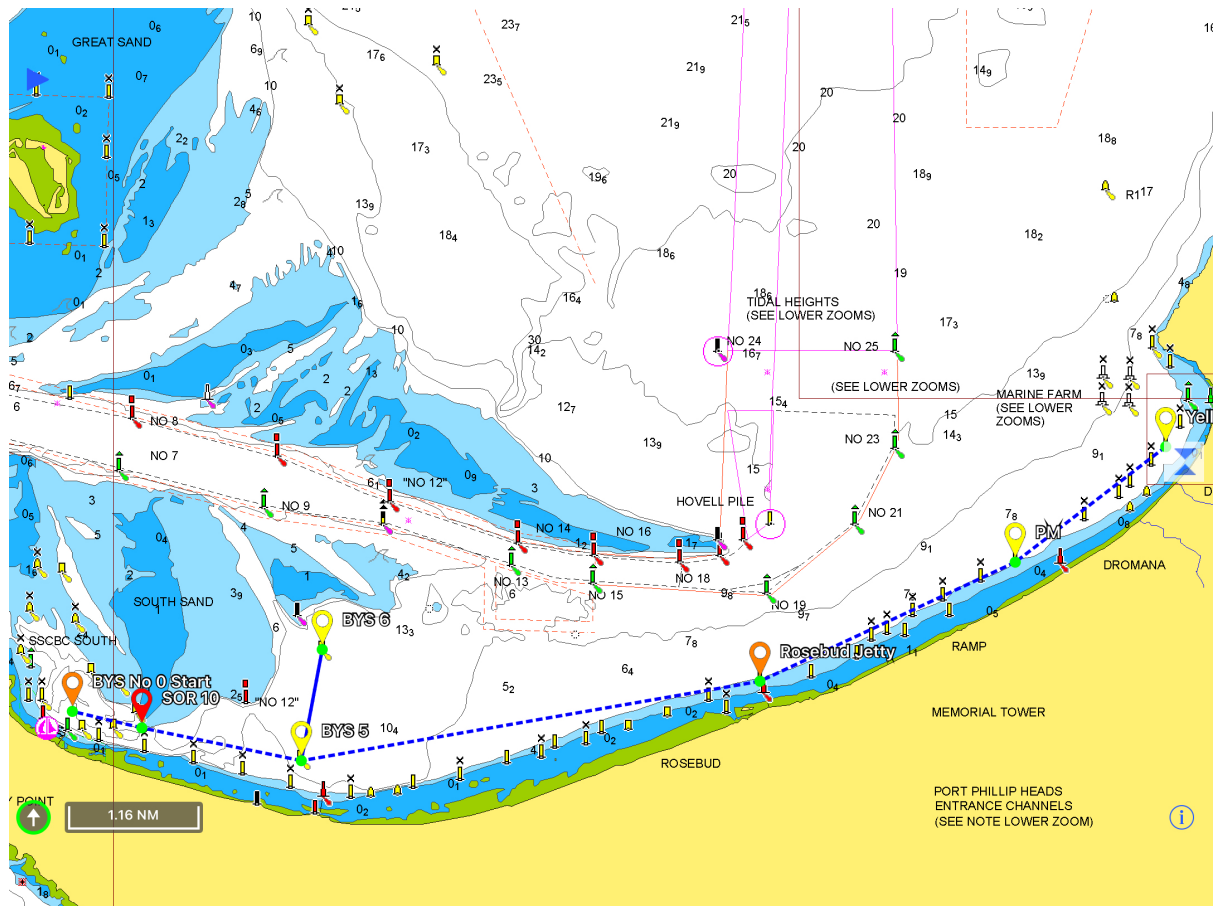
## WHEN WE GET THERE - from 1700 hrs onwards

- partake of a **sundowner**
- partake of welcoming **BYS hospitality**
- join MCYS members for **Dinner, presentations and fellowship!**
- enjoy **sunset from the deck...**

**COURSE**

Start Yellow 2 (STBD) - PM (Stbd) - Rosebud Jetty (Stbd) - BY5 5 (Stbd) - BY5 6 (Port) - BY5 5 (Stbd) - SOR 10 (STBD) - BY5 O (STBD) Finish

- Finish between BY5 O (S 38 21.265 E 144 46.565) and BY5 Tower - Record your times!



**POWER BOAT NAVIGATION MARKS (course above - same as Yachts!)**

YELLOW 2 - Leave to Starboard - position - S38 18.978 E 144 59.055

PM - Leave to Stbd - position - S38 19.841 E144 57.329

ROSEBUD JETTY - Leave to Stbd - position - S 38 20.916 E 144 54.402

BY5 No 5 - Leave to Stbd - position - S 38 21.633 E 144 49 145

BY5 No 6 - Leave to Port - position - S 38 20.630 E 144 49 384

BY5 No 5 - Leave to Starboard - position - S 38 21.633 E 144 49 145

SOR 10 - Leave to Starboard - position - S 38 21.337 E 144 47 315

BY5 O - Leave to Starboard - position - S 38 21.265 E 144 46.565

any queries regarding the event may be directed to [commodore@mcys.com.au](mailto:commodore@mcys.com.au)



M.C.Y.S

**POWER BOATS - PREDICTED LOG\***

(\*fill in BEFORE the event and forward as below)

BOAT NAME : ..... REG. No .....  
SKIPPER : ..... OBSERVER: .....  
Predicted Speed: ..... knots (**remember this is not a race!**)

	predicted time	actual time	points
YELLOW 2 - (Start b/n 1300 and 1330)			
PM -			
ROSEBUD JETTY -			
BYS No 5 -			
BYS No 6 -			
BYS No - 5			
SOR 10 -			
BYS 0 - (finish)			
TOTAL POINTS			

(\*fill in actual time and points during/after the event and on completion forward as below)

I, being the responsible **SKIPPER** of the above boat, declare the times recorded above to be true and correct and that I did not alter my speed to adjust times of arrival.

.....  
(name)

I, being the responsible **OBSERVER** on the above boat, declare the times recorded above to be true and correct and that the skipper did not alter the speed to adjust times of arrival.

.....  
(name)

**YACHTS - FINISH TIME REPORTING \* - my finish time was - ..... hrs ..... mins ..... seconds**

BOAT NAME : ..... SAIL No. ....  
SKIPPER : ..... OBSERVER: .....

I declare that: I **did/did not** use any sails other than main and jib (circle one please)!

I, being the responsible **SKIPPER** of the above yacht, declare the finish time recorded above to be true and correct.

.....  
(name)

I, being the responsible **OBSERVER** on the above yacht, declare the finish time recorded above to be true and correct

.....  
(name)

(\*complete as appropriate and send to [commodore@mcys.com.au](mailto:commodore@mcys.com.au) or scan and text to 0429 313 211)