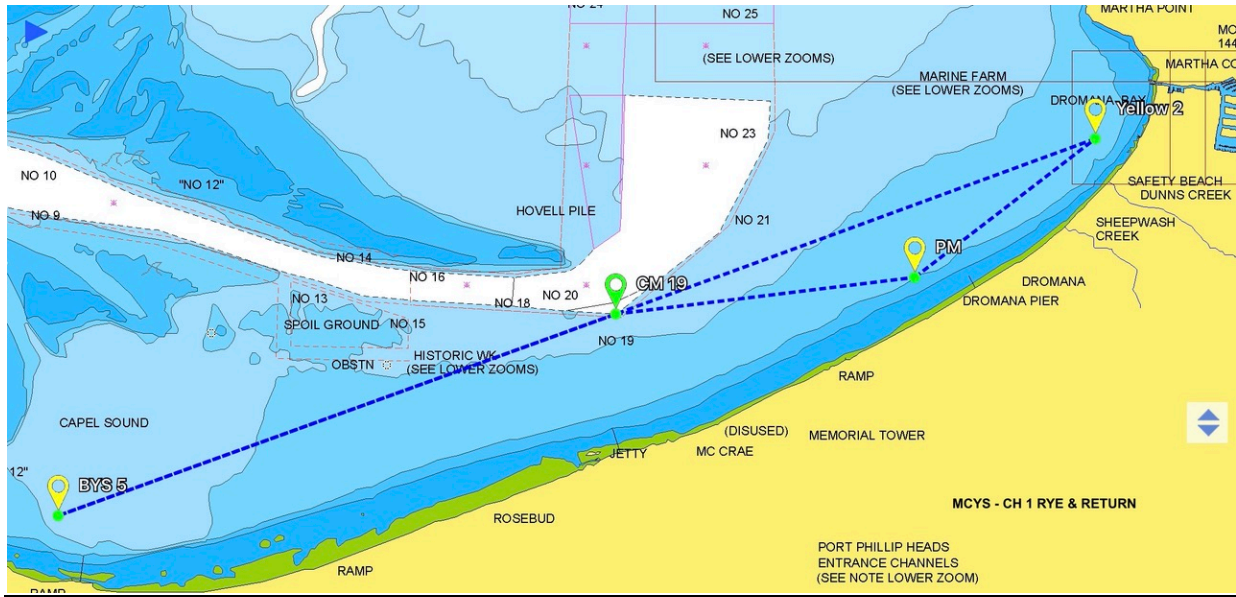
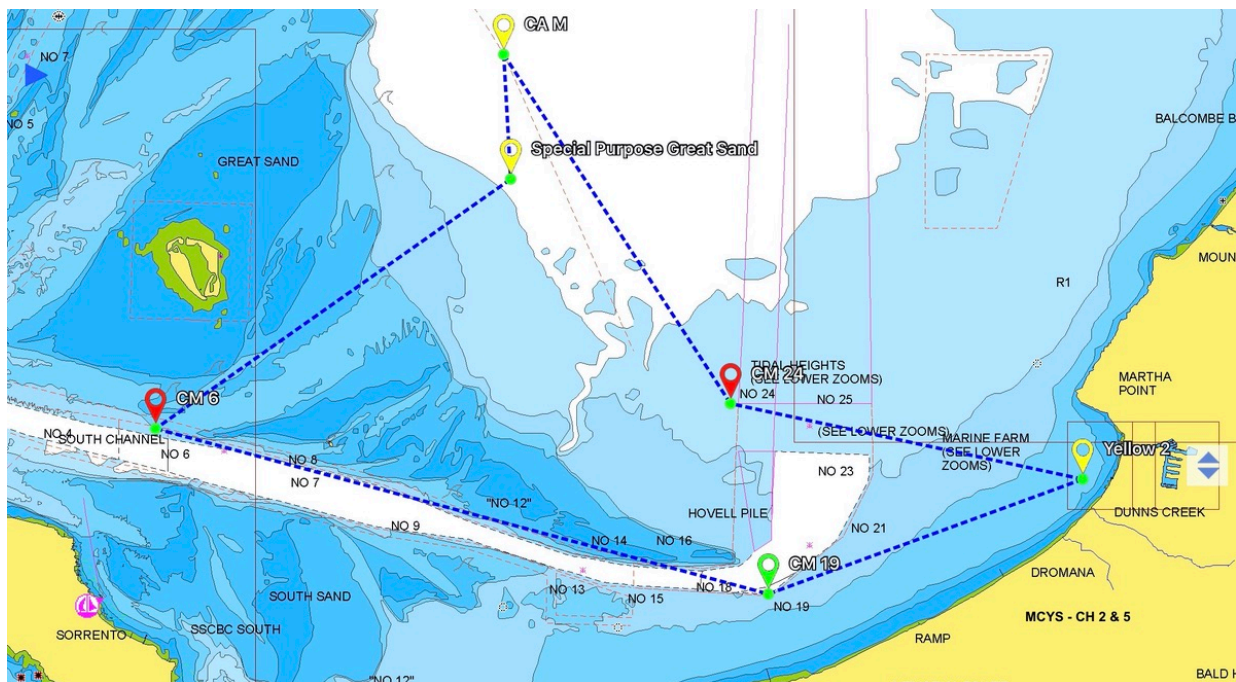


CH 1- Rye & Return - YELLOW 2(S), CM 19 (P), BYS 5 (S), CM 19 (S), PM (P),
YELLOW 2 (P) **(16.7 NM)**



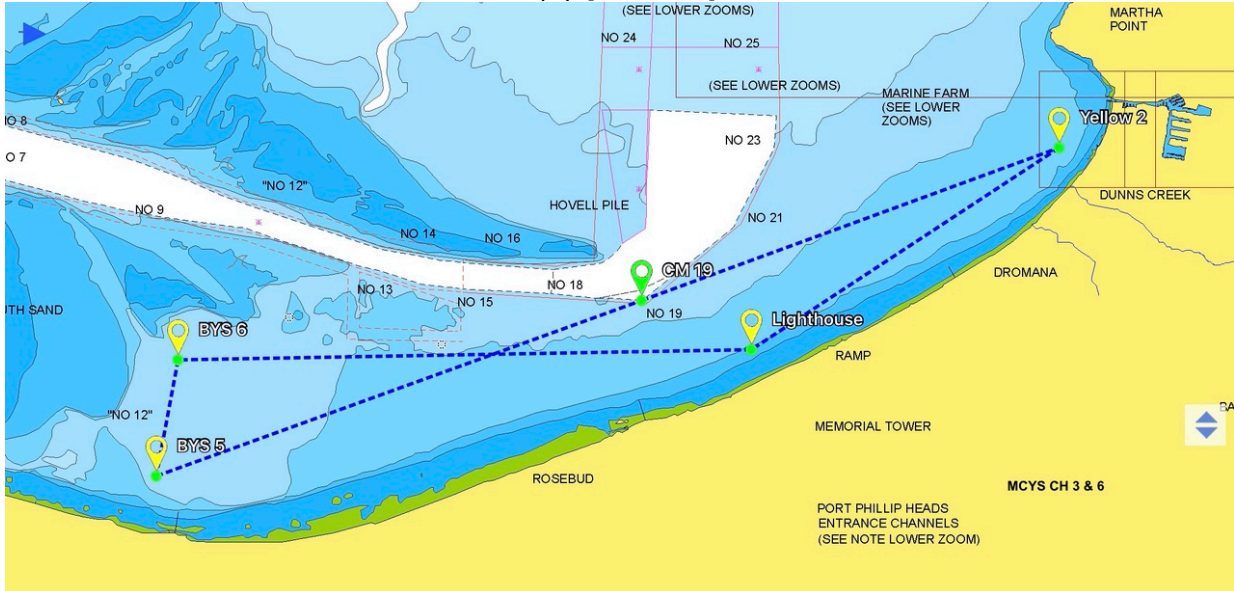
CH 2- Great Sands - YELLOW 2(P), CM 24(S), CA M (P), SPGS (S), CM 6 (P), CM 19 (P), YELLOW 2 (P) NB: proceeding from CM 6 to CM 19 stay out of the South Channel where possible watching out for depth! **(26.4 NM)**

CH 5- REVERSE Great Sands - YELLOW 2 (S), CM 19 (S), CM 6 (S), SPGS (P), CA M (S), CM 24 (P), YELLOW 2 (S) NB: proceeding from CM 19 to CM 6 stay out of the South Channel where possible watching out for depth! **(26.4 NM)**



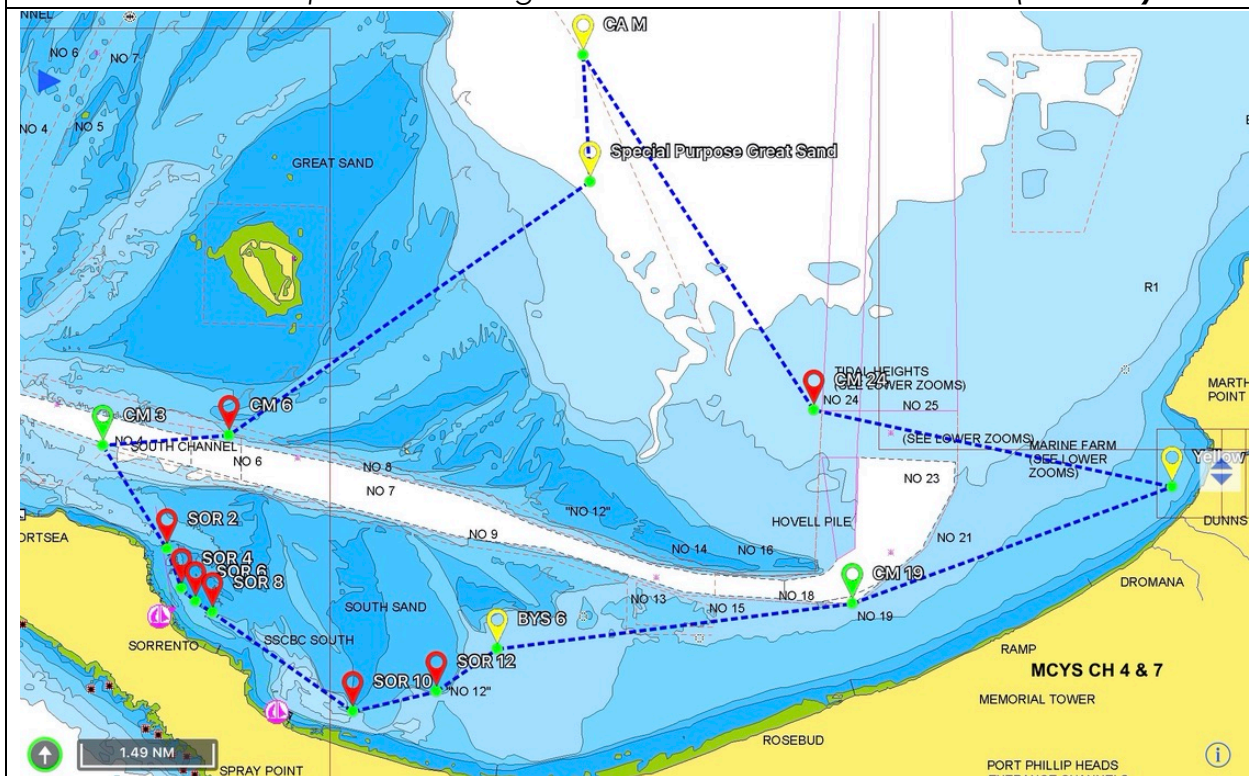
CH 3-Capel Sound - YELLOW 2 (S), Lighthouse (S), BYS 6 (P), BYS 5 (P), CM 19 (S),
YELLOW 2 (P) **(17.4 NM)**

CH 6-REVERSE Capel Sound - YELLOW 2 (S), CM 19(P), BYS 5(S), BYS 6 (S), Lighthouse(P),
YELLOW 2 (P) **(17.4 NM)**

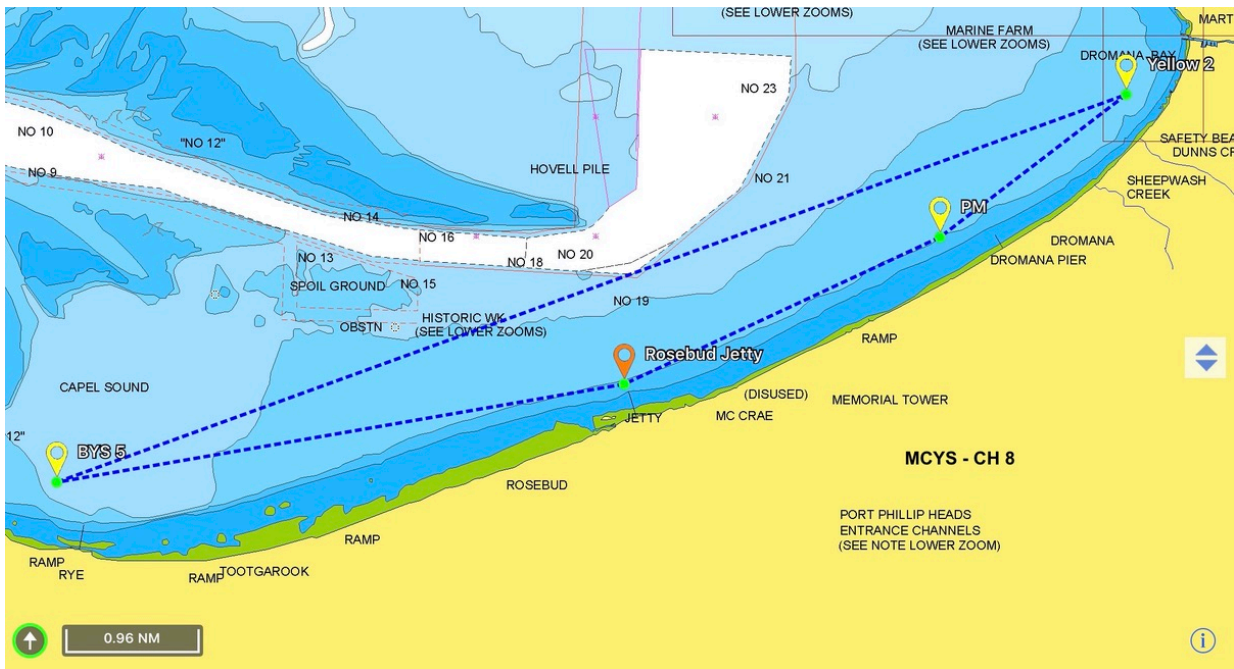


CH 4-All Channels L.D.- YELLOW 2(P), CM 24(S), CA M (P), SPGS (S), CM 6 (S),
CM 3 (P), SOR 2 (P), SOR 4 (P), SOR 6 (P), SOR 8 (P), SOR 10 (P),
SOR 12 (P), BYS 6 (S), CM19 (S), YELLOW 2 (P) *NB: proceeding from
SPG to CM 6 watch depth and proceed through Pinnacle
Channel WITH CAUTION (30.6 NM)*

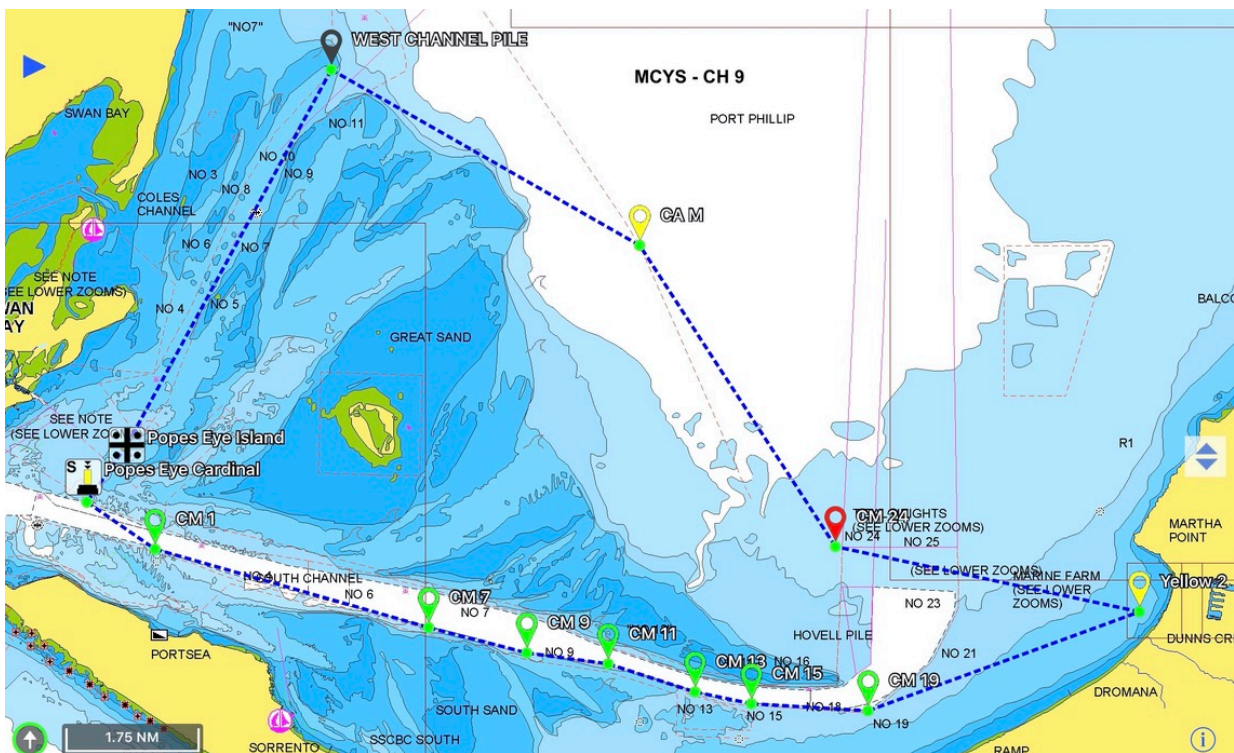
CH 7-REVERSE All Channels LD- YELLOW 2 (S), CM 19 (S), BYS 6 (P), SOR 12(S), SOR 10(S),
SOR 8(S), SOR 6(S), SOR 4(S), SOR 2(S), CM 3 (S), CM 6 (P),
SPGS (P), CA M (S), CM 24 (P), YELLOW 2 (S)
*NB: proceeding from CM 6 to SPGS watch depth and
proceed through Pinnacle Channel WITH Caution (30.6 NM)*



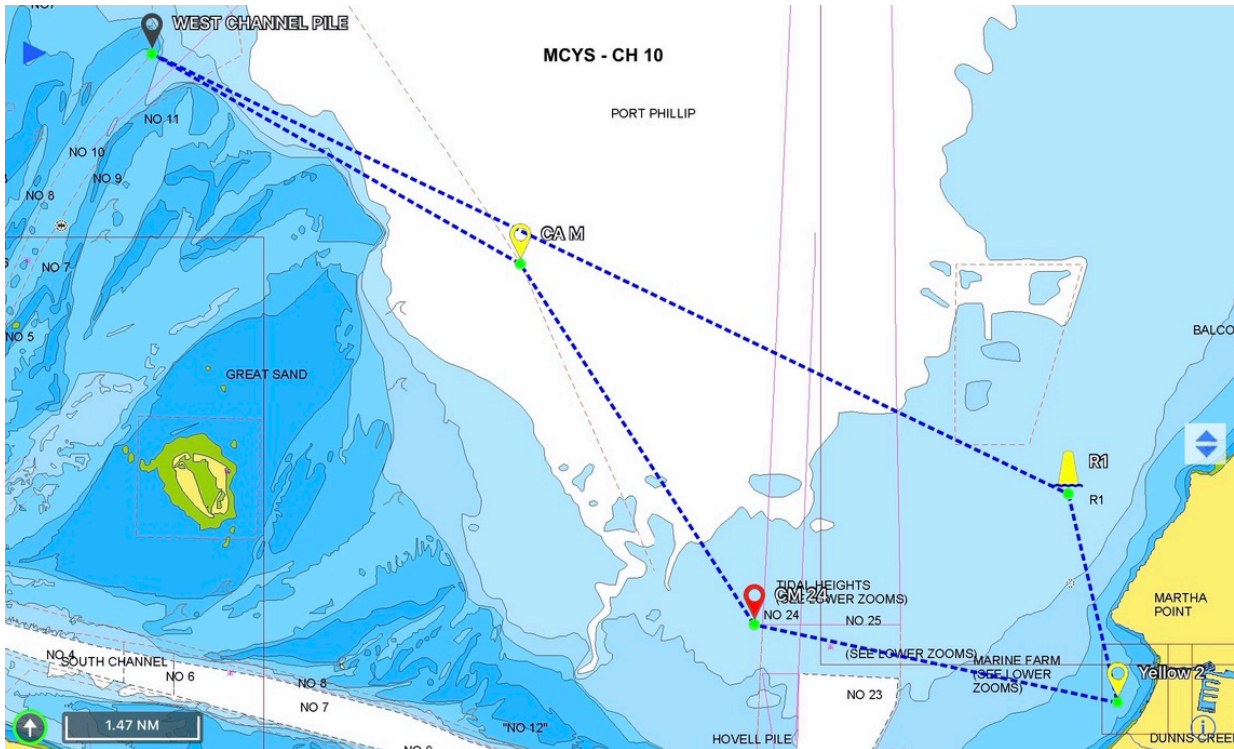
**CH 8- COASTAL TOUR - YELLOW 2 (S), PM (S), Rosebud Jetty (S), BYS 5 (S), YELLOW 2 (P)
(16.7 NM)**



**CH 9- POPES EYE - YELLOW 2 (P), CM 24 (S), East Cardinal (P), WCP (P), PE BEACON (P),
PE Cardinal (P), CM 1 (P), CM 7 (P), CM 9 (P), CM 11 (P), CM 13 (P),
CM 15 (P), CM 19 (P), YELLOW 2 (P) (34.9 NM)**

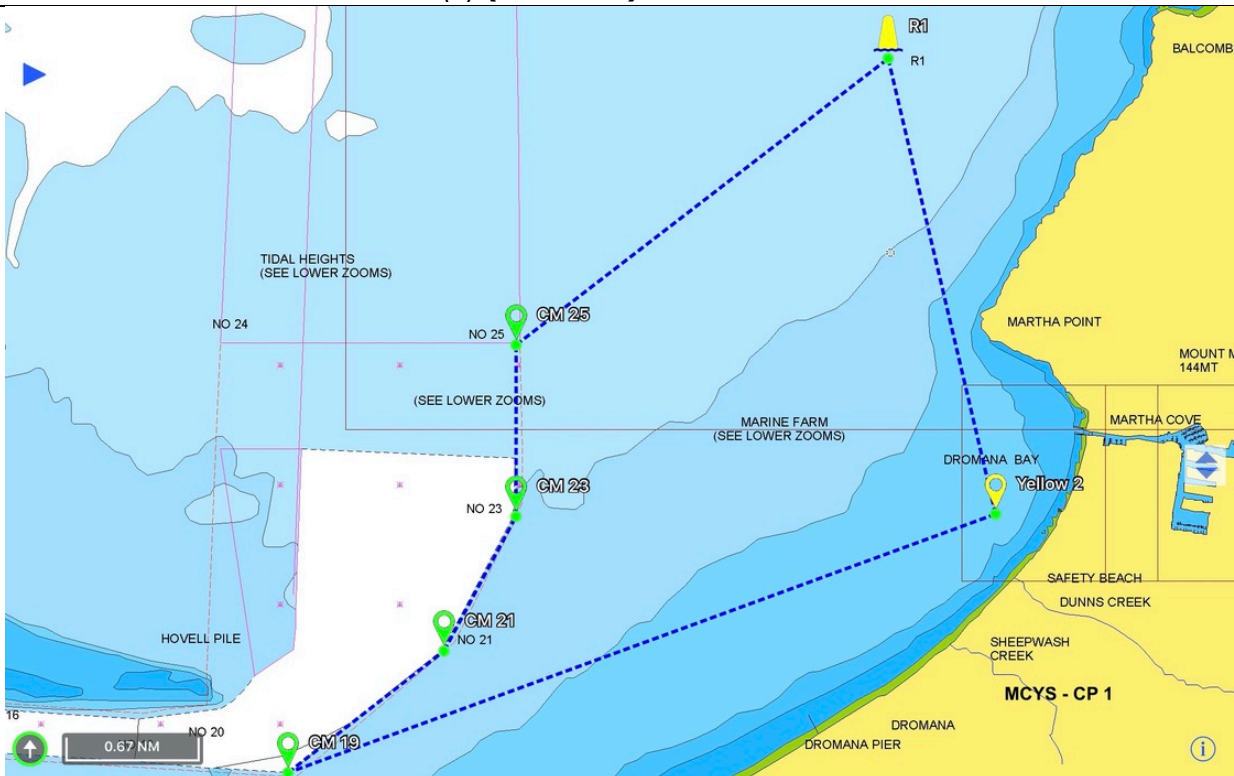


**CH 10 -WEST CHANNEL PILE - YELLOW 2 (S), CM 24 (S), CA M (P), WCP (S), R 1 (S),
YELLOW 2 (S) (27.3 NM)**

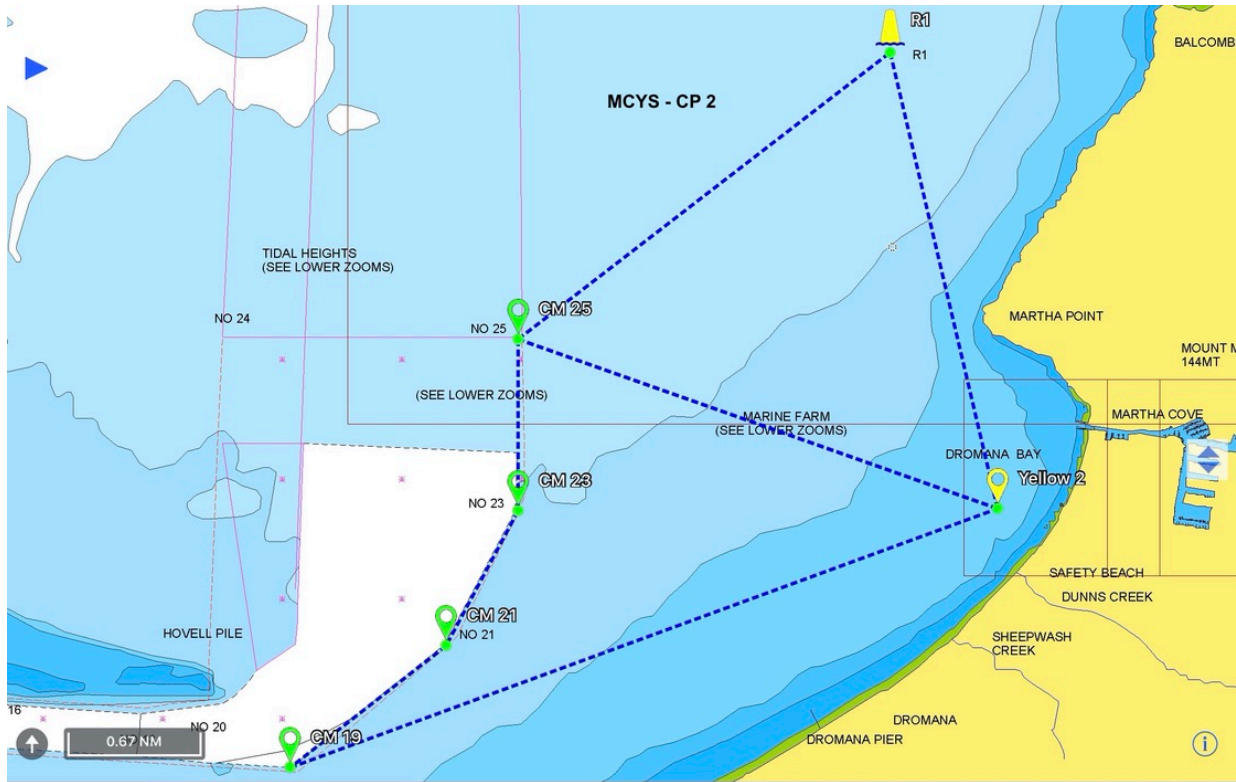


CRUISE PURSUIT ("CP") Courses:

**CP 1- "Dolphin 1" - YELLOW 2 (S), CM 19(S), CM 21 (P), CM23 (P), CM 25(S), R 1 (S),
YELLOW 2 (S) (11.27 NM)**

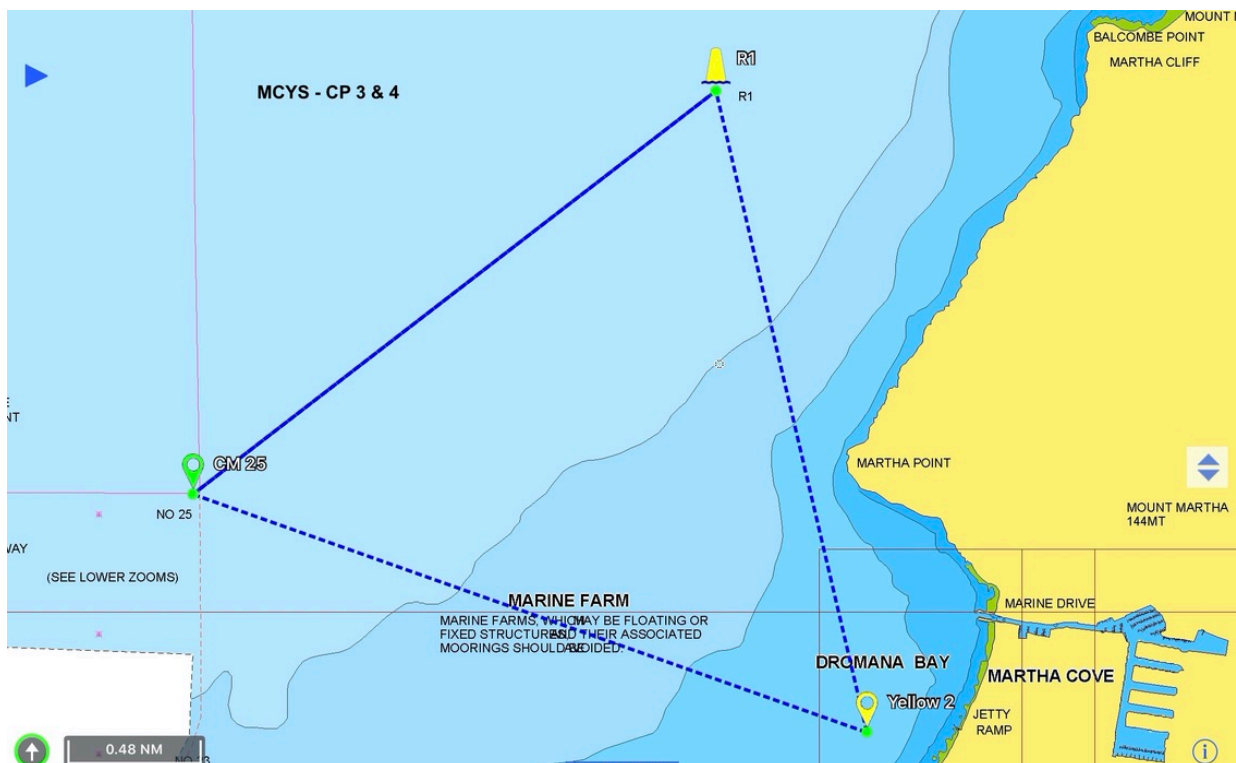


CP 2 - "Dolphin 2" - YELLOW 2 (S), CM 25(S), R1 (S), YELLOW 2 (S), CM 25 (P), CM 23 (S), CM 21(S), CM 19 (P), YELLOW 2 (P) (16.44 NM)

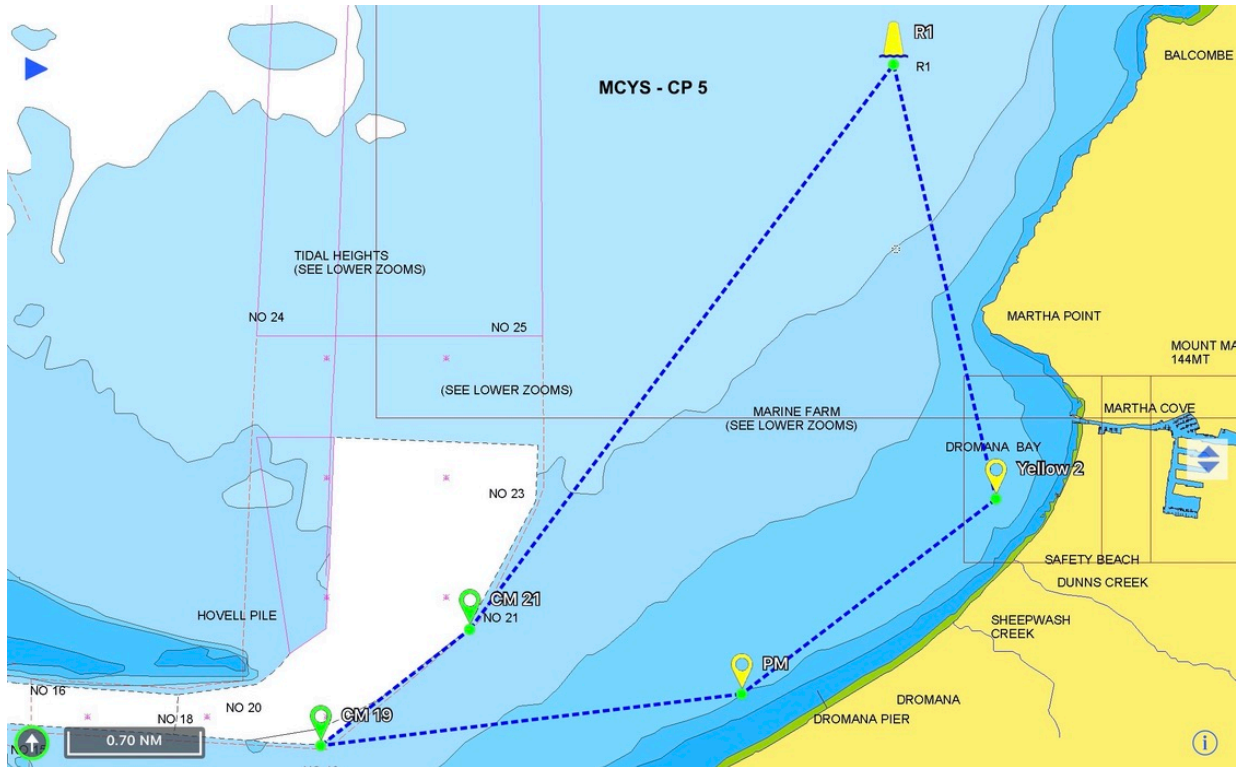


CP 3 - "R1 - 25" - YELLOW 2 (P), R1 (P), CM 25 (P), R1 (P), CM 25 (P), YELLOW 2 (P) (12.14 NM)

CP 4 - "25 - R1" - YELLOW 2 (S), CM 25 (S), R 1 (S), CM 25 (S), R1 (S), YELLOW 2 (S) (12.14 NM)

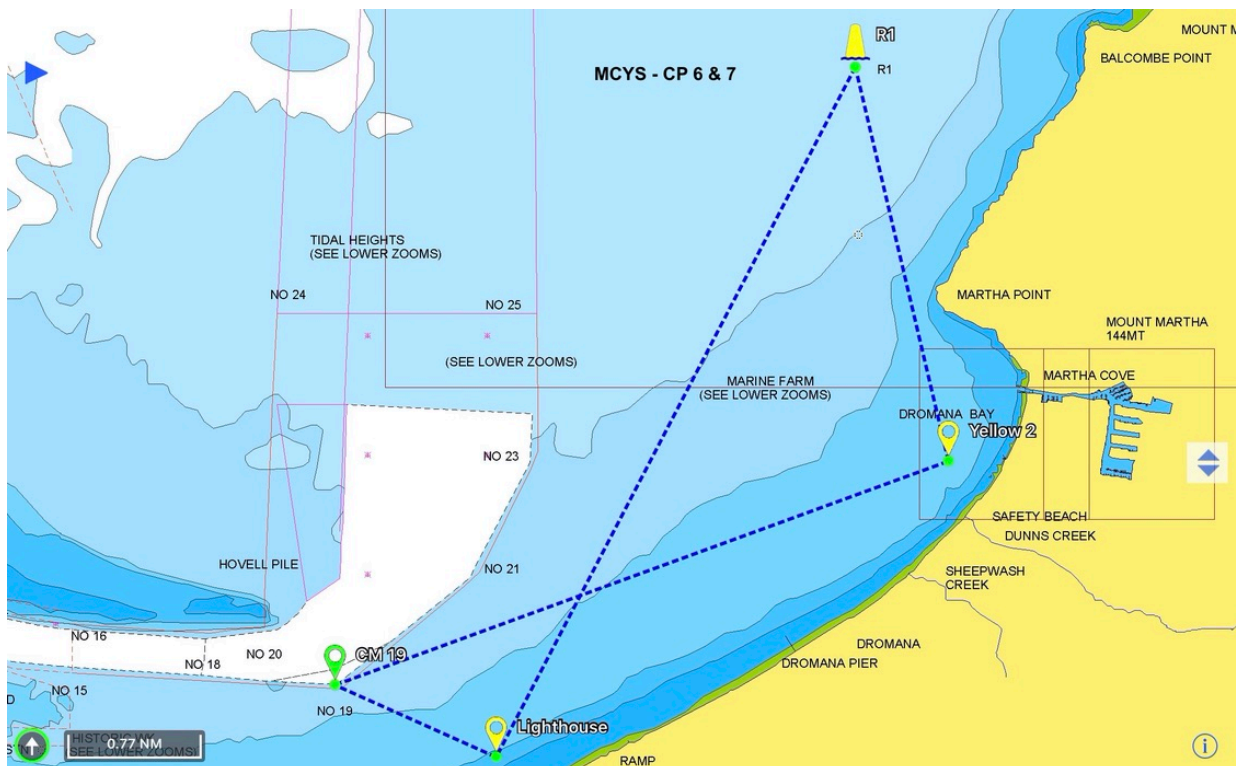


**CP 5- "Martha Pt Coastal" - YELLOW 2 (S), PM (S), CM 19(S), CM 21(P), R1(S),
YELLOW 2 (S) (11.13 NM)**



**CP 6 - "Figure 8.1"- YELLOW 2 (P), R1 (P), Lighthouse (S), CM 19 (S), YELLOW 2 (P)
(11.83 NM)**

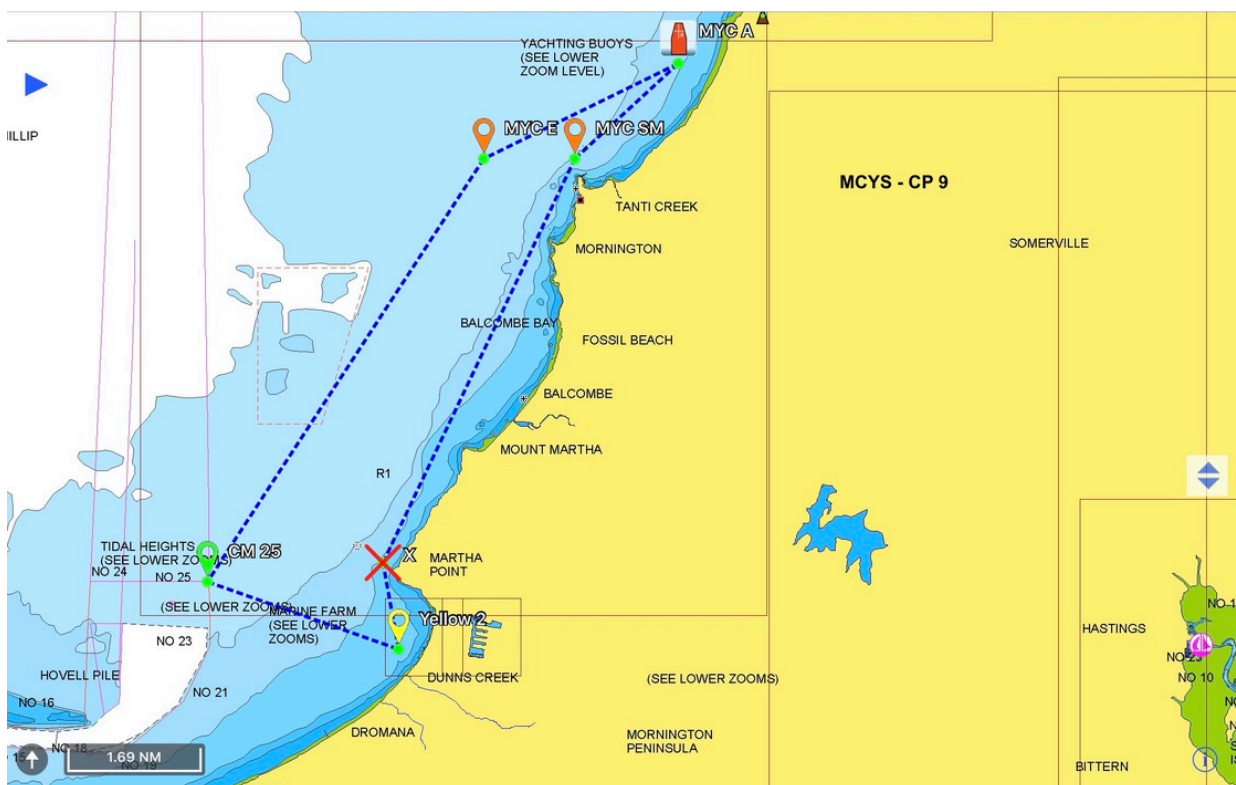
**CP 7- "Figure 8.2" - YELLOW 2 (S), CM 19 (P), Lighthouse (P), R1 (S), YELLOW 2 (S)
(11.83 NM)**



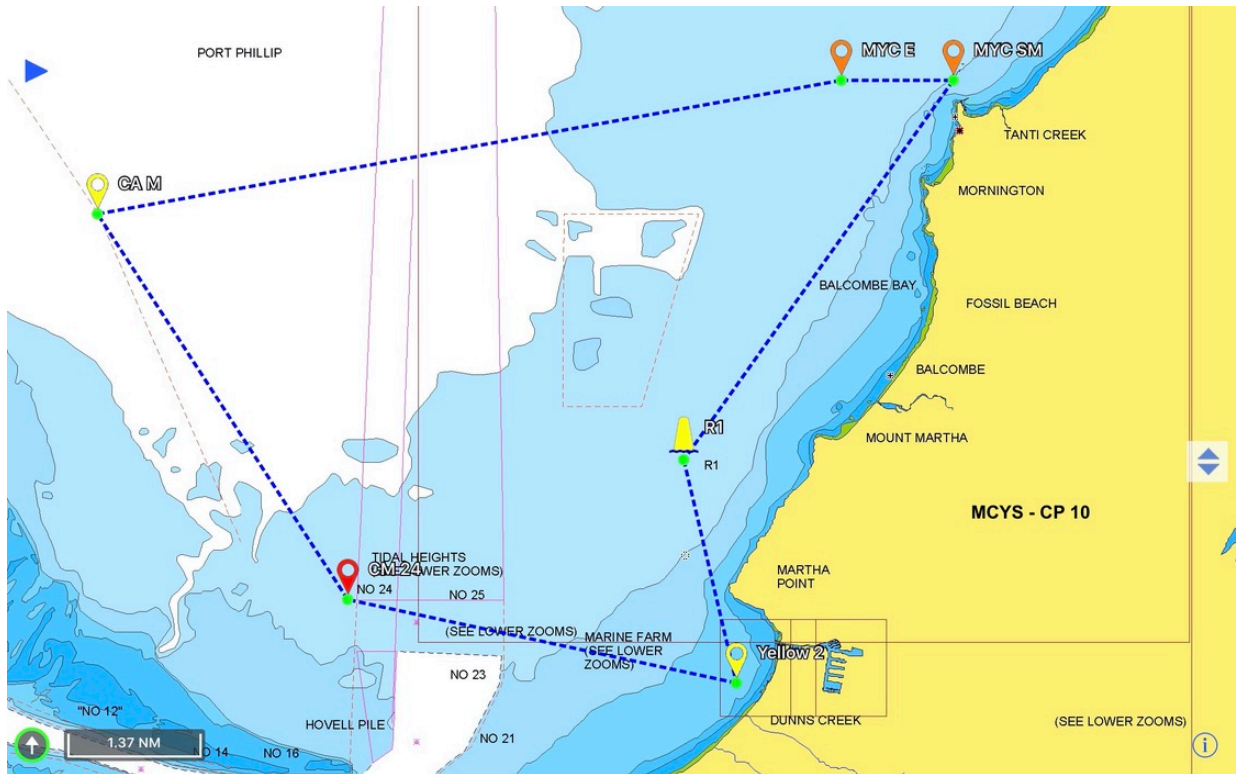
CP 8 - "Mornington Mussel Farm" - YELLOW 2 (P), R 1 (S), MMF-SE (P), MMF-NE (P), MMF-NW (P), MMF-SW (P), R1 (P), YELLOW 2 (S)
(Around Mornington Mussel Farm anti-clockwise) **(12 NM)**



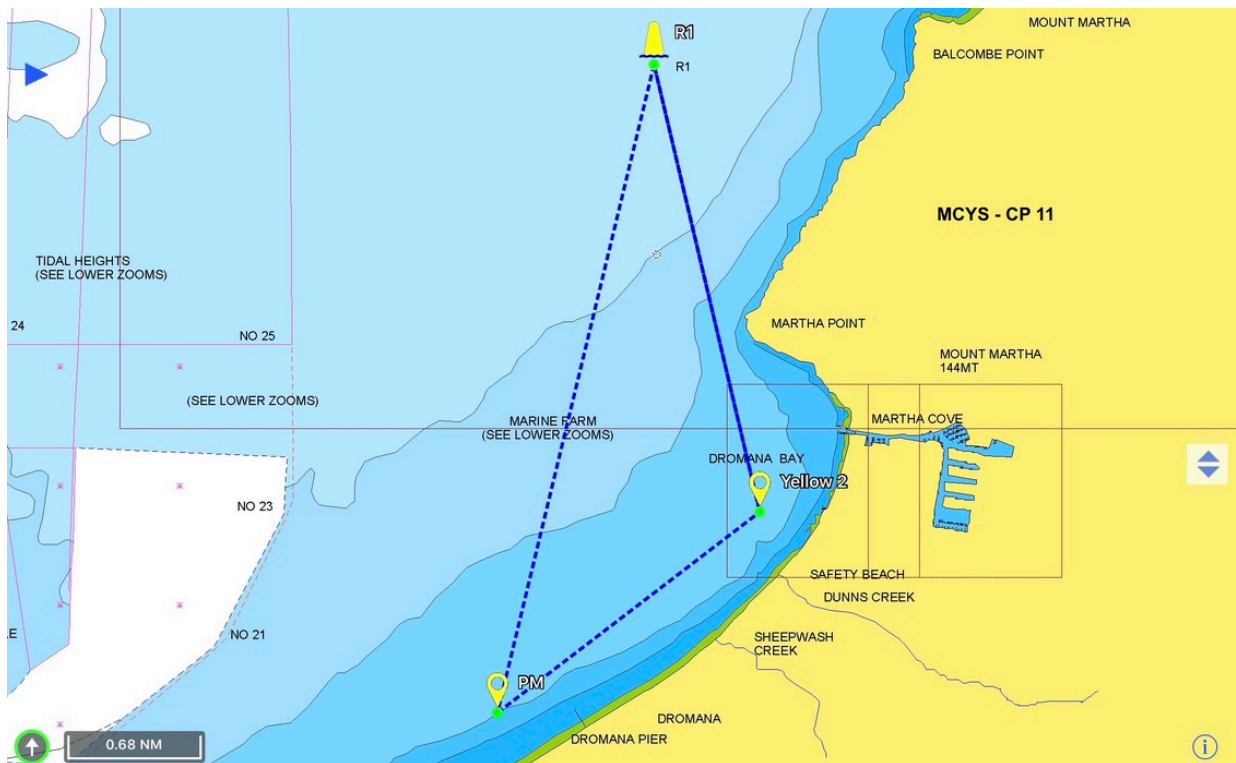
CP 9 - "Mornington Coastal" - YELLOW 2 (P), MYC SM(P), MYC A (P), MYC E (P), CM 25 (P), YELLOW 2 (P) (20.28 NM)



CP 10 - "Schnapper Point" - YELLOW 2 (P), CM 24 (S), CA M (S), MYC E (S), MYC SM (S), R 1 (P), YELLOW 2 (S) (25.14 NM)

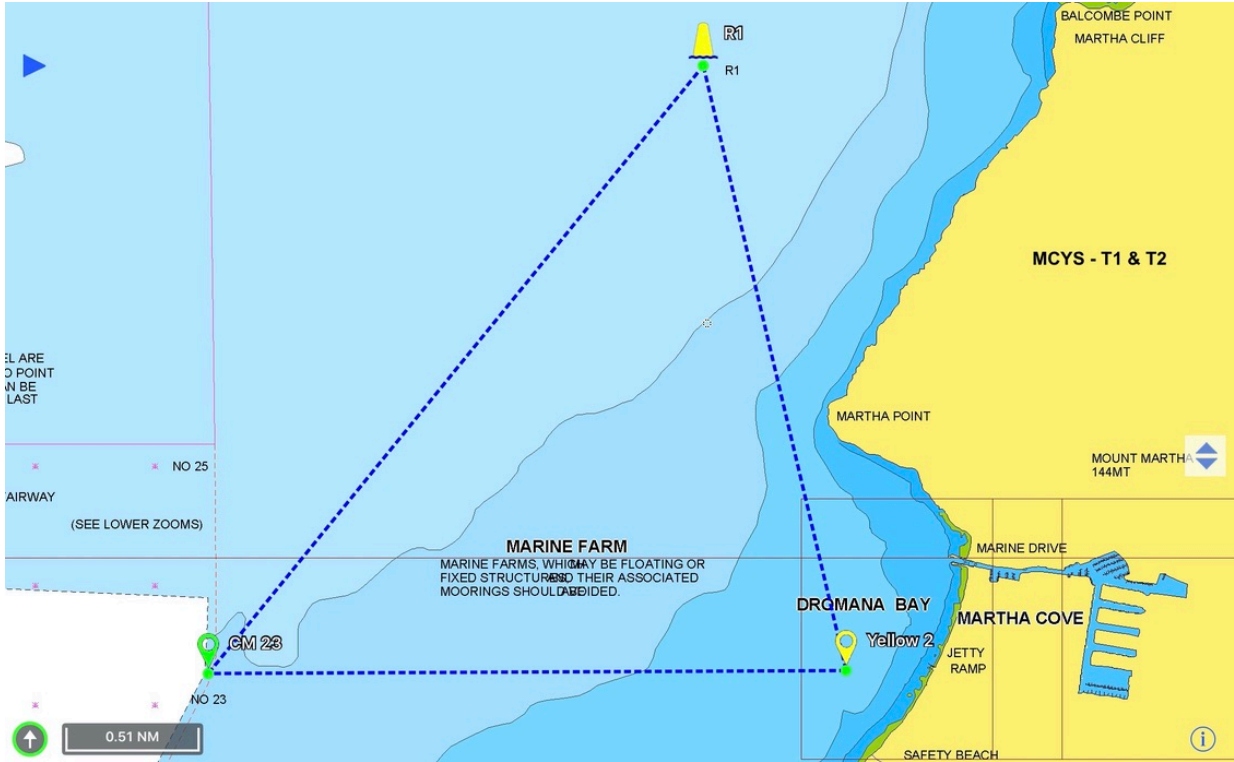


CP 11 - "R1 Again" - YELLOW 2 (P), R1 (P), PM (P), YELLOW 2 (P), R1 (P), YELLOW 2 (S) (12.33 NM)

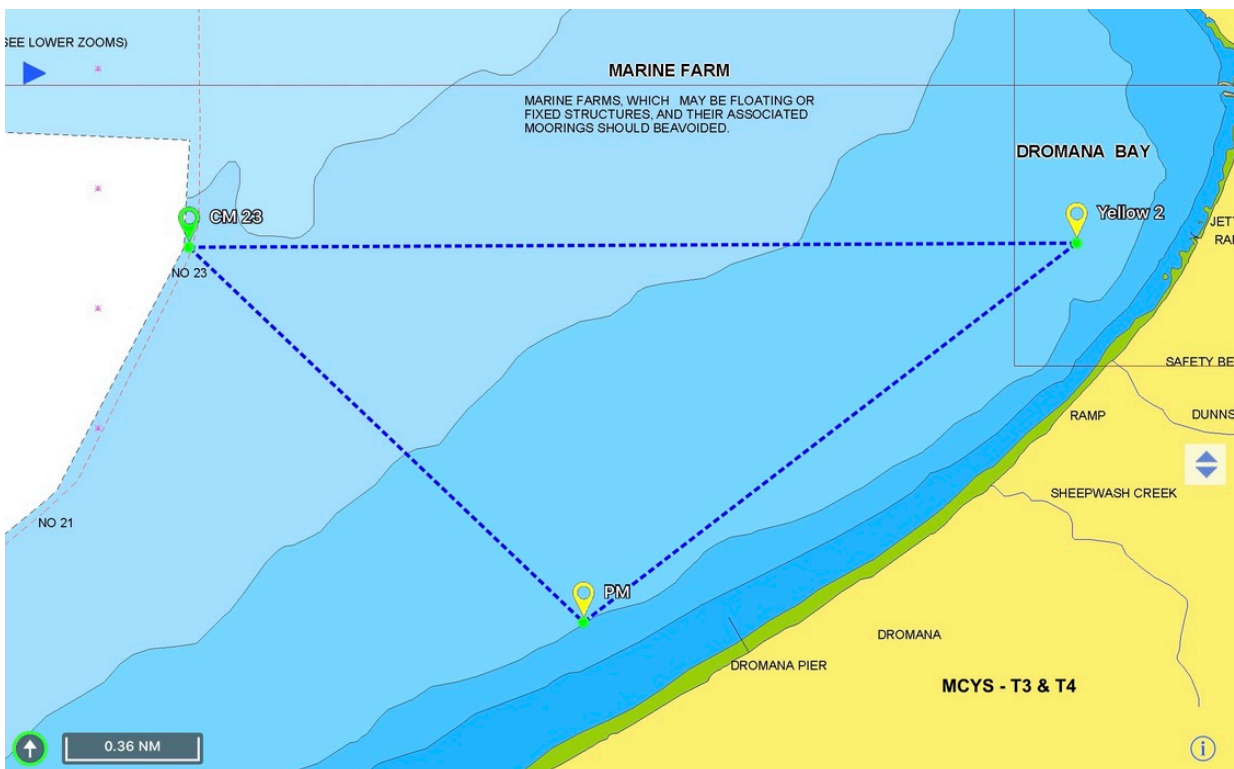


TWILIGHTS

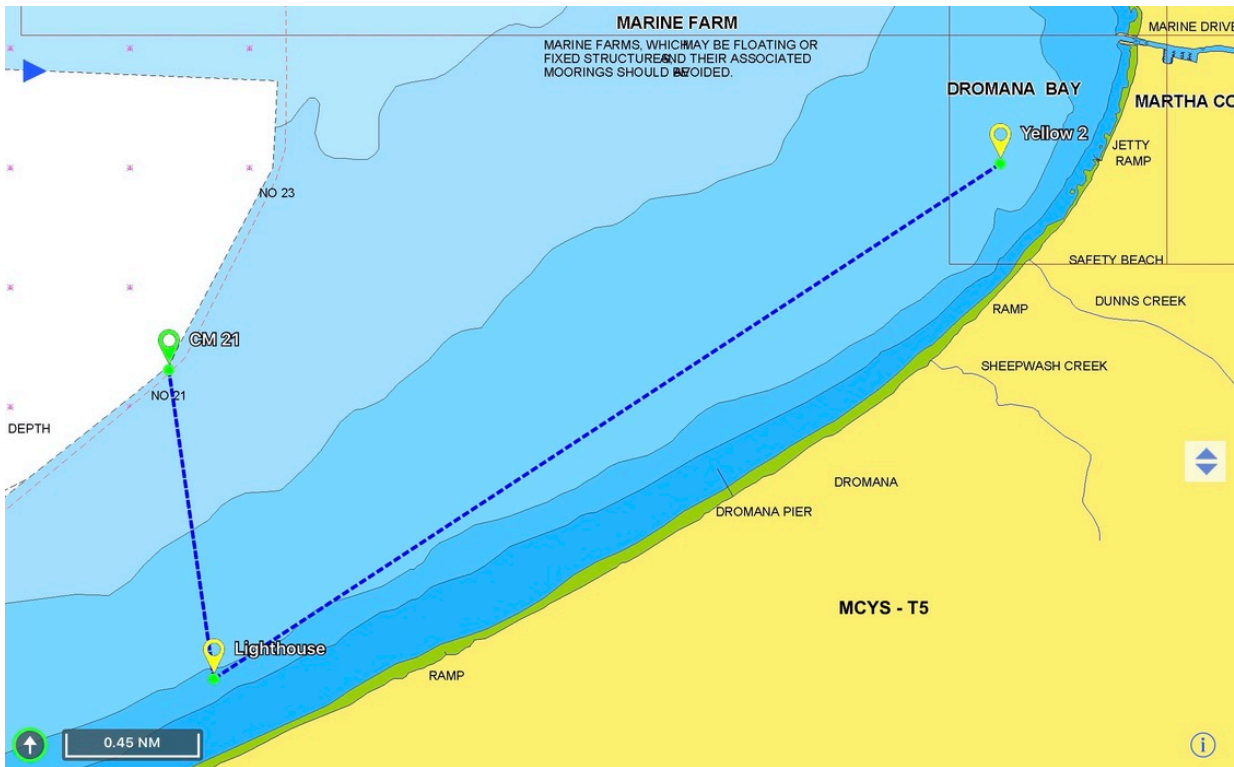
T 1 S/SE/NE/W	YELLOW 2 (S), CM 23(S), R1(S), YELLOW 2 (S) (7.83 NM)
T 2 N/SW/E	YELLOW 2 (P), R1(P), CM 23(P), YELLOW 2 (P) (7.83 NM)



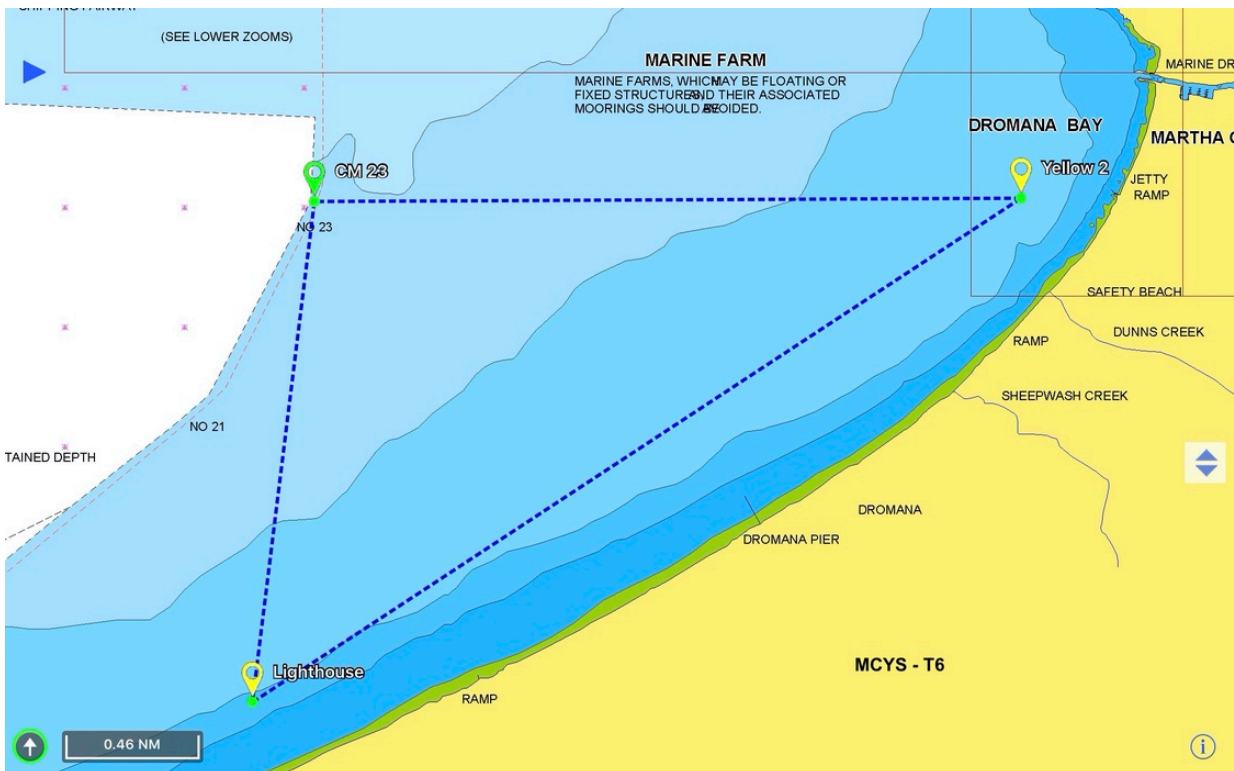
T 3 W/SE/NE	YELLOW 2 (P), CM 23 (P), PM (P), YELLOW 2 (P) (5.64 NM)
T 4 SW/NW/E	YELLOW 2 (S), PM (S), CM 23 (S), YELLOW 2 (S) (5.64 NM)



T 5 SW/N/E YELLOW 2 (S), Lighthouse (S), CM 21(S), lighthouse (P),
YELLOW 2 (P) **(8.46 NM)**



T 6 W/S/NE. YELLOW 2 (P), CM 23 (P), Lighthouse (P), YELLOW 2 (P) **(7.36 NM)**



NB: NOTE that courses and START and FINISH have changed from 2019/2020 season, in particular the start and finish with the elimination of the South or North turning marks - and see paragraphs 12 and 16 of the Sailing Instructions - CHECK THE COURSES!



START

NOTE that the start is either in a generally Northerly direction, leaving the 2nd Yellow to Port, designated by Start (P) in the course directions, or in a generally Southerly direction leaving the 2nd Yellow to Starboard, designated by Start (S) in the course directions.

FINISH

NOTE that the finish may be either in a generally Northerly direction, leaving the 2nd Yellow to Port, designated by Finish (P) in the course directions, or in a generally Southerly direction leaving the 2nd Yellow to Starboard, designated by Finish (S) in the course directions.